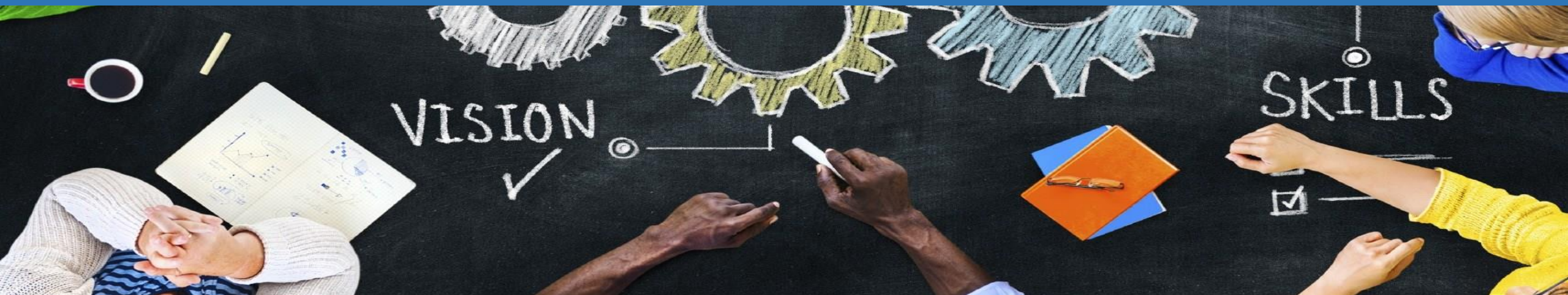




The UCLA Rapid, Rigorous, Relevant (3R) Implementation Science Hub: Supporting EHE Initiatives



2022 HIV Next Generation Conference
December 2, 2022

Why Implementation Science and the EHE Initiative?

- Healthcare systems often struggle to provide high quality services with fewer resources
- Implementation science offers evidence-based strategies for incorporating research investments in order to “maximize healthcare value and improve public health”¹
- Investing in rapid, rigorous, relevant HIV implementation research is critical to ending the HIV epidemic^{2,3}

1. Bauer MS, Damschroder L, Hagedorn H, Smith J, Kilbourne AM. An introduction to implementation science for the non-specialist. *BMC Psychology*. 2015;3(1):1-12.

2. Fauci AS, Redfield RR, Sigounas G, Weahkee MD, Giroir BP. Ending the HIV epidemic: a plan for the United States. *JAMA*. 2019;321(9):844-845.

3. Glasgow RE, Chambers D. Developing robust, sustainable, implementation systems using rigorous, rapid and relevant science. *Clinical and Translational Science*. 2012;5(1):48-55.

UCLA 3R Hub Goal

To provide leadership and support for rapid, rigorous, and relevant (3R) HIV-related implementation research emphasizing pragmatic study designs and methods that address health equity and produce sustainable solutions

The UCLA 3R Hub Team

- CHIPTS PI: Steve Shoptaw, PhD
- CHIPTS Executive Director: Uyen Kao, MPH
- Hub PI: Alison Hamilton, PhD, MPH
- Hub Co-Is: Norweeta Milburn, PhD, Chunqing Lin, PhD, Sung-Jae Lee, PhD, Anna Lau, PhD
- Hub Consultants: Ana Baumann, PhD, Matthew Chinman, PhD, Geoff Curran, PhD, Erin Finley, PhD, Russ Glasgow, PhD
- Hub Project Director: Elena Rosenberg-Carlson, MPH



Core Hub Activities

Offerings for EHE awardees:

- Consultation, coaching, and technical assistance
- Expert roundtable feedback sessions
- Support for fulfilling ISC³I/NIH reporting requirements
- Resources and opportunities

Offerings for the broader community:

- Implementation science methods workshops
- Beachside Chat events
- Consultation (limited basis)

Questions?



Thank You!

Check out our YouTube playlist with past events!

<https://youtube.com/playlist?list=PLIeXfMZXqWd5YHUfQhmlSwfKjgwcbIAj7>

With any additional questions or concerns, please contact Elena:

ERosenberg-Carlson@mednet.ucla.edu