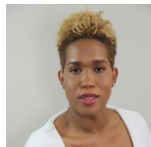


## Addressing Medical Mistrust: Implications for HIV and Other Conditions

### Speaker Biographies

**Jayda Arrington** is from Los Angeles, California, and is a mother of two daughters. She is an advocate and an activist. She has been a member of the CAB for three years, and is the ICAB representative for her site for The International Maternal Pediatric Adolescent AIDS Clinical Trials (IMPAACT) Network. Jayda holds an associate degree in paralegal studies and is currently a junior at Cal State University Dominguez-Hills studying Psychology. She plans to obtain her bachelor's degree in the spring of 2021. Her goal is to be a case manager/social and human service assistant to ultimately help people affected by HIV/AIDS. Jayda love food, music and movies.



**Nina Barkers** is the Program Coordinator for the A.M.A.A.D. (Arming Minorities against Addiction and Disease) Institute. She has been serving the LGBT community for over 8 years ranging from (HIV prevention, counseling, linkage, education and advocacy). In this position, she orchestrates overall program execution, communication engagement and coordination of events. She is grateful for the opportunity to keep elevating the culture she represents. Nina Barkers is a part of the Training & Development Team with (UWC) Unique Women's Coalition and takes pride in educating the communities universally to reach the overall goal of improved Health Care.



**Allison Bearden, MD, MPH, MS** is a Med-Peds trained (LAC+USC) physician who completed an adult Infectious Disease fellowship where her research was focused on a cross-sectional study of vitamin D in HIV infected adults. She also completed her fellowship training in Pediatric Infectious Diseases here at LAC+USC. Dr. Bearden has completed both an MPH and an MS in Clinical Investigation and has published in the area of vitamin D and HIV and viral infections, as well as the area of healthcare associated infections. Her research interests include Vitamin D and infectious diseases, probiotics, mother-to-child transmission of HIV & CMV, adolescent HIV management and prevention, and expansion of PrEP services.



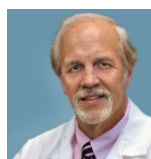
**Laura Bogart, MS, PhD** is a Senior Behavioral Scientist at the RAND Corporation and member of the Pardee RAND Graduate School faculty. A social psychologist specializing in community-based participatory research to understand and address health disparities, her primary interests are in the areas of stigma and medical mistrust, and much of her research focuses on HIV prevention and treatment. Much of her research is in the U.S. (with racial/ethnic minority populations), and she also conducts research in Botswana, South Africa, and Uganda. She is a Fellow in both the American Psychological Association and the Society of Behavioral Medicine. She was awarded the American Psychological Association's Division 44 (LGBT Psychology) Award for Distinguished Contribution to Ethnic Minority Issues. Bogart received her Ph.D. and M.S. in Social Psychology from the University of Pittsburgh.



**Alicia D. Bonaparte, PhD** is currently Associate Professor of Sociology at Pitzer College and trained as a medical sociologist with a specialization in reproductive health, health disparities, and female crime and deviance. Her research interests include the gendered social hierarchy within American medicine as well as the intersection of race and gender in healthcare practices and racial disparities. She is also co-editor of the anthology *Birthing Justice: Black Women, Pregnancy, and Childbirth* and has a forthcoming chapter in Routledge's *Motherhood Companion* examining the collusion of race, class, and gender regarding choices about midwife-attended births and is contributing a chapter to Routledge's *Black Feminist Sociology* examining non-U.S. based global health researchers whose work utilizes a BFS lens as well as identifying how and why this model foments further advocacy-oriented evolution within research and interventionist approaches geared towards Black women within the African diaspora.



**Dr. Marino A. Bruce, PhD, MSRC, MDiv** is a social and behavioral scientist with interests in the integration of the full range of determinants influencing chronic kidney disease and cardiovascular disease risk among African American males. He is also an ordained Baptist Minister with two decades of experience serving in multiple African American churches and his current program of research examines how faith has implications for biopsychosocial pathways linking stress to disease risk and progression among African American men across the life course. Dr. Bruce is committed to leveraging the strengths of research and faith communities towards efforts to improve the health of disadvantaged and disenfranchised males, their families, and other related populations.



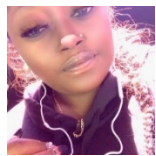
**Patrick T. Dowling, MD, MPH** is the Kaiser Endowed Professor of Community Medicine and Chair of the UCLA Department of Family Medicine (DFM). A graduate of the Medical College of Ohio, he completed his Family Medicine (FM) residency at Cook County Hospital in Chicago and earned an MPH in Health Services at Michigan. He is board certified in FM and Preventive Medicine/ Public Health. He is Vice Chair of the LA County Public Health Commission and is a member of the Executive Board of the Charles R Drew University of Medicine and Science in South Central Los Angeles since 2005. He is also the California Community Foundation (CCF) elected board president. His professional interests include health policy, and the linkage of medical education to underserved, under-resourced communities as a means of improving access and reducing health disparities. His research interests include cross cultural and bi-national medicine and the integration of behavioral medicine/substance abuse treatment within primary care.



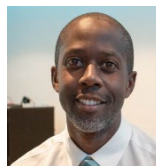
**Nina Harawa**, PhD, MPH, is a Professor-in-Residence with the David Geffen School of Medicine at UCLA and with Charles R. Drew University of Medicine and Science, where she leads CDU's HIV Research Pillar (Drew Center for AIDS Research, Education, and Services or Drew CARES). She directs the CHIPTS policy core. Dr. Harawa's research involves understanding trends in HIV and other sexually transmitted infections and developing effective, holistic interventions for prevention, care, and treatment. She has conducted innovative research with high-risk African American men, sexually active African American and Latina women, older adults, incarcerated and post-incarcerated cis-men and transwomen. Much of this work involves partnering with local governmental and community organizations to address health issues in populations that experience health disparities. She currently co-leads a multi-site NIDA-funded study examining the impacts of incarceration, related interventions and policies on HIV in Black MSM and is one of the Principal Investigators on two NIDA-funded studies to promote linkage to and retention in PrEP and HIV care for MSM and transgender women following release from incarceration.



**Charles McWells**, BA earned a Bachelor of Arts degree in Political Science from Claremont McKenna College. Diagnosed with AIDS in 1996, Mr. McWells has spent the past twenty years advocating for persons living with or at risk of becoming infected with HIV/AIDS. Since 2010, he has been an Instructor with the Community Faculty Program at Charles R. Drew University of Medicine and Science. He is currently the Project Director or Program Manager for a variety of HIV prevention programs funded by the federal, state and county governments. McWells was the Principal Investigator of a National Institute of Health cancer grant study that explored the feasibility of smoking cessation programs tailored for Black same-gender-loving HIV positive men. For the past eight years, he has served as the Co-Host of *The Good News Radio Magazine*, a weekly broadcast that features interviews with healthcare professionals, clinical researchers, faith-based leaders and community advocates.



**Tatiana Pajazz Maire Piggue** was born at MLK hospital, in Los Angeles. She graduated from West Adams Preparatory High in 2012 and has been a patient of MCA Clinic at LAC+USC since 2012 when she was pregnant with her son. Her favorite food is tacos, and favorite color is black. She enjoys going to the beach, going out with friends, playing video games and cooking, and she loves being a mother. Tatiana currently works at USC.



**Ace Robinson**, MPH, MHA is a leading administrative and policy HIV advocate and population health expert residing in Washington, DC, USA in addition to being the Acting CEO and co-founder of the Avielle Foundation in the USA wherein he combats violence through brain health research. Currently, Robinson serves as the Director of Strategic Planning & Center for Ending the HIV Epidemic for NMAC, formerly known as the National Minority AIDS Council. He also supports the Desmond Tutu HIV Foundation in Cape Town, South Africa that is a leading global entity focused on the eradication of AIDS and reduction of HIV. Previously, he has served as the Director of the AIDS Prevention Unit at UCLA and as the Executive Director of the CARE Center in Long Beach. Robinson holds a Master of Healthcare Leadership from Brown University, a Master of Public Health from the University of Cape Town, in addition to a Bachelor of Chemistry from Duke University.



**Ricky Rosales** was appointed the sixth AIDS Coordinator for the City of Los Angeles in 2012. In this role, he advises the Mayor and City Council on HIV, Hepatitis and related health issues. He is currently serving as co-chair of the Los Angeles County Commission on HIV and has previously chaired both the Los Angeles County HIV Prevention Planning Committee and the California HIV Planning Group. Ricky has interest in expanding the visibility of locally developed research and programs in the prevention field and currently sits on the CHIPTS Community Advisory Board.



**Steven Shoptaw**, PhD, is a licensed psychologist and is the Center Director for CHIPTS. He is Professor in the UCLA Departments of Family Medicine and Psychiatry and Biobehavioral Sciences and Vice Chair of Research in Family Medicine. Dr. Shoptaw has a portfolio of work that focuses on the treatment of addiction and HIV prevention in the context of addiction in the Western U.S. where stimulant use is the single strongest predictor of HIV transmission. Dr. Shoptaw is a member of the DAIDS-funded, HIV Prevention Trials Network (HPTN) Executive Committee, and Clinical Site Leader for several HPTN studies, including HPTN 061, which documented that high-risk Black men who have sex with men (MSM) have 7% incidence in Los Angeles. Dr. Shoptaw also is MPI on a 5-year cooperative agreement (U01 DA036267; the MStudy) to establish a cohort of MSM of color to investigate interactions between non-injection use of methamphetamine, cocaine, opiates and binge drinking and HIV transmission dynamics.



**Damone Thomas**, the Treatment Education Specialist for Project Rise at APLA Health, got his first taste of HIV Advocacy as a volunteer high school student in Kingston, Jamaica. In 2008 Damone worked behind the scenes in several HIV organizations learning the mechanics of advocacy, which later helped him start his own organization. Damone started his own HIV Advocacy Campaign called Healing with Hope (HwH) in September of 2012. Along with his online effort to promote awareness, he currently does HIV/STDs Testing & Counseling with John Wesley Community Health (JWCH) and Board Secretary for To Help Everyone (T.H.E) Health & Wellness Center.