

---

# Overview and Progress of NIH-Funded Ending the HIV Epidemic Projects

**3<sup>rd</sup> National Ending the HIV Epidemic  
Partnerships for Research Meeting**

April 15-16, 2024 | Los Angeles, CA

---

**Brian Mustanski**

**Co-PI, Implementation Science  
Coordination Initiative (ISCI)**

**Northwestern University**



**HIV Implementation Science**  
Coordination Initiative

# ISCI team

---



**Brian Mustanski**  
Co-Director



**Nanette Benbow**  
Co-Director



**Russell Brewer**  
Co-I



**Ginger McKay**  
Co-I



**Dennis H. Li**  
Co-I



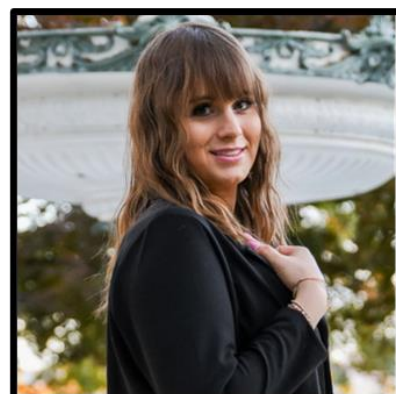
**Maria Pyra**  
Co-I



**JD Smith**  
Co-I



**James Merle**  
Postdoctoral Scholar



**Alithia Zamantakis**  
Research Assistant  
Professor



**Morgan Purrier**  
Project Director



**Mica Pachicano**  
Research  
Study  
Assistant



**Jessica Kassanits**  
Research Project  
Coordinator



**Emily Urbanczyk**  
Research Study Assistant



**Alec Powers**  
Data Analyst

# Disclosures

---

- Funded by an administrative supplement to the Third Coast Center for AIDS Research, a National Institutes of Health center (P30 AI117943).
- No conflicts of interest to disclose

# ISCI-Hub Network

## ISCI (Coordination)

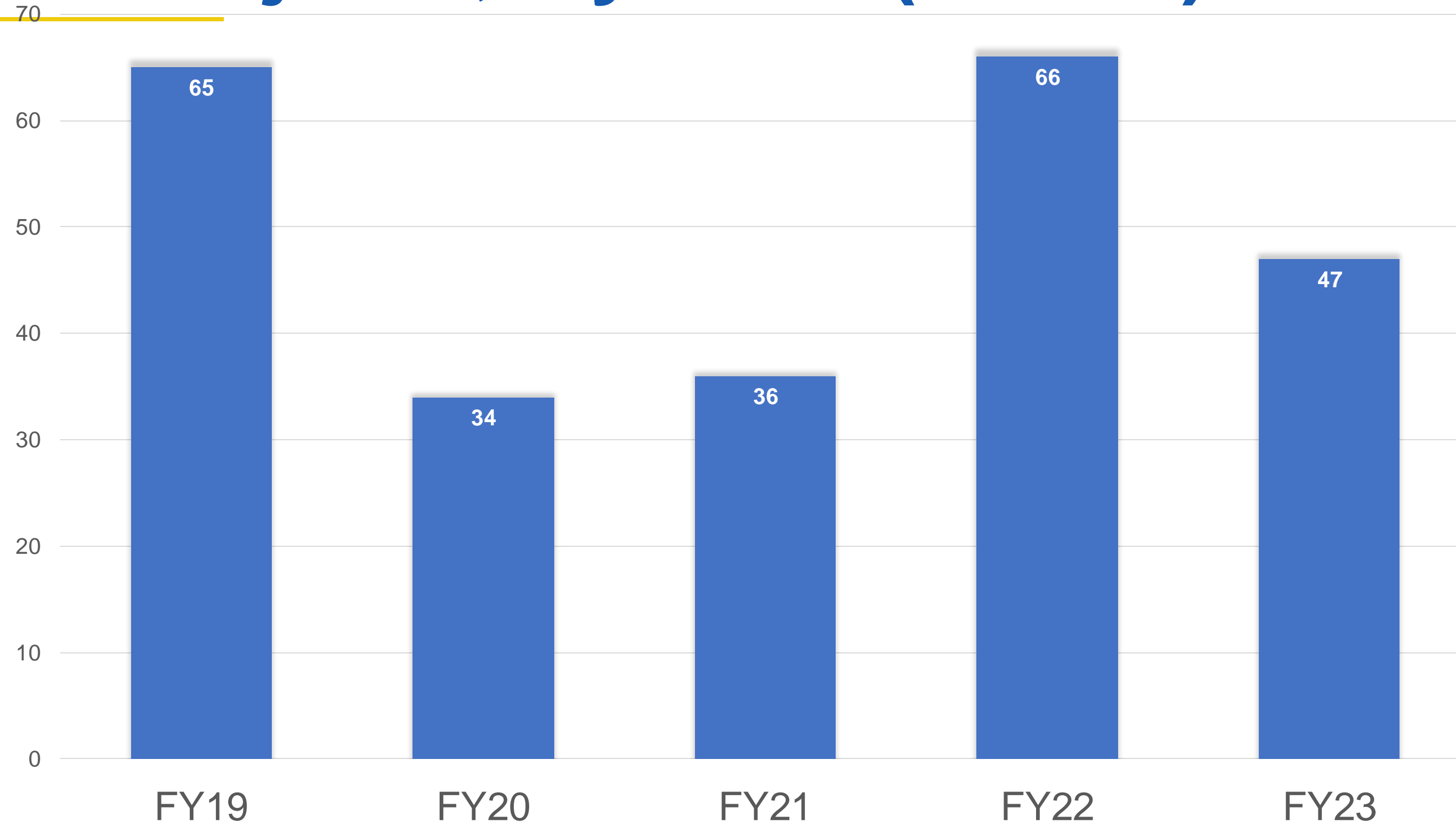
- Coordinate data collection, harmonization, and progress reporting to NIH
- Maintain online community of practice and newsletter
- Host webinar series
- Activities towards creating generalizable knowledge:
  - Systematic reviews
  - Decision-support tools
  - *JAIDS* Special Issue
  - Tool development
  - Dissemination



## IS Consultation Hubs

- Oversee portfolios of related projects
- Offer:
  - Tailored coaching
  - Broader IS technical assistance
  - Cross-project learning
- Facilitate and assist projects with mandatory reporting of NIH required measures and outcomes to ISCI
- Contribute to generalizable knowledge activities

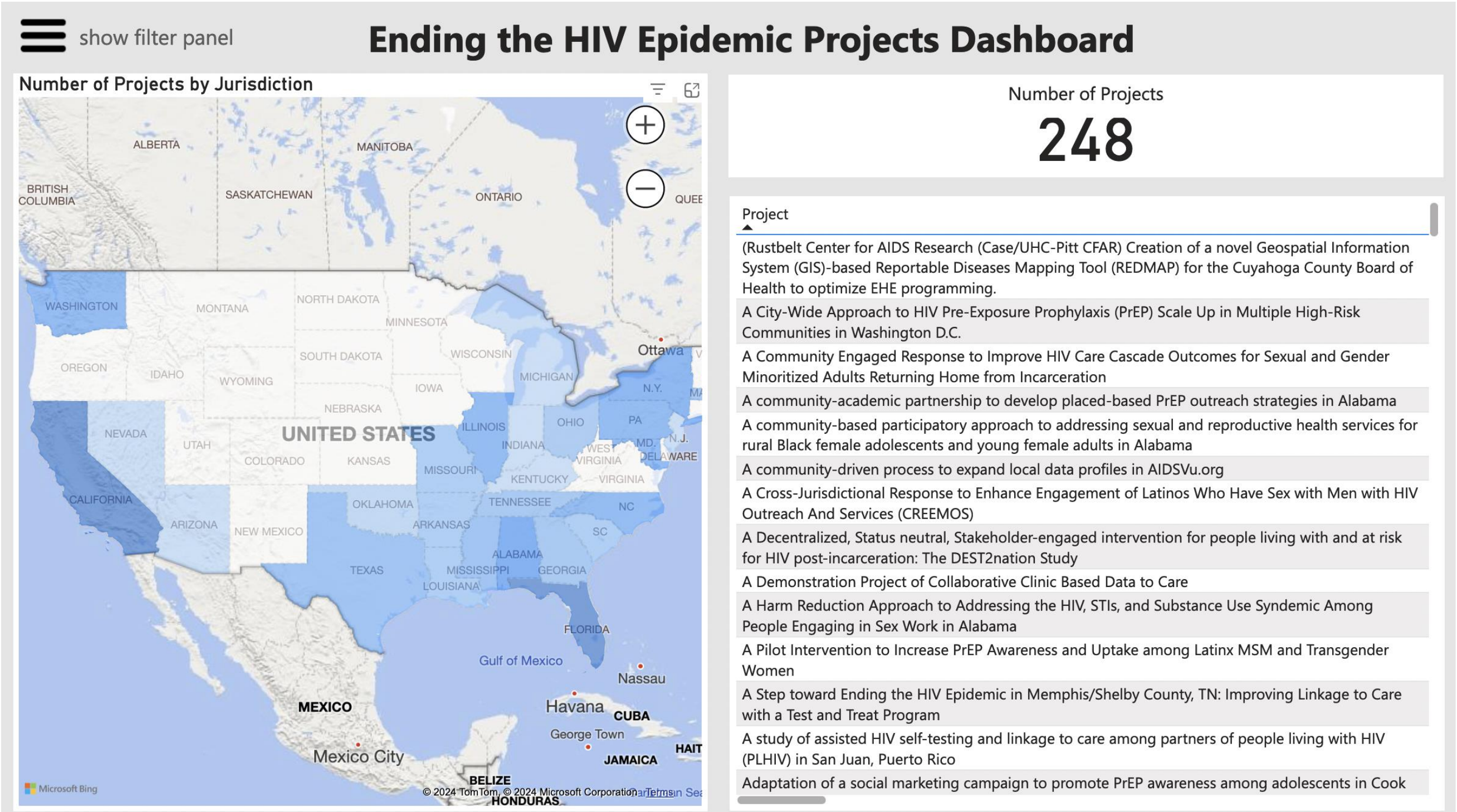
# EHE Projects, By Year (n=248)



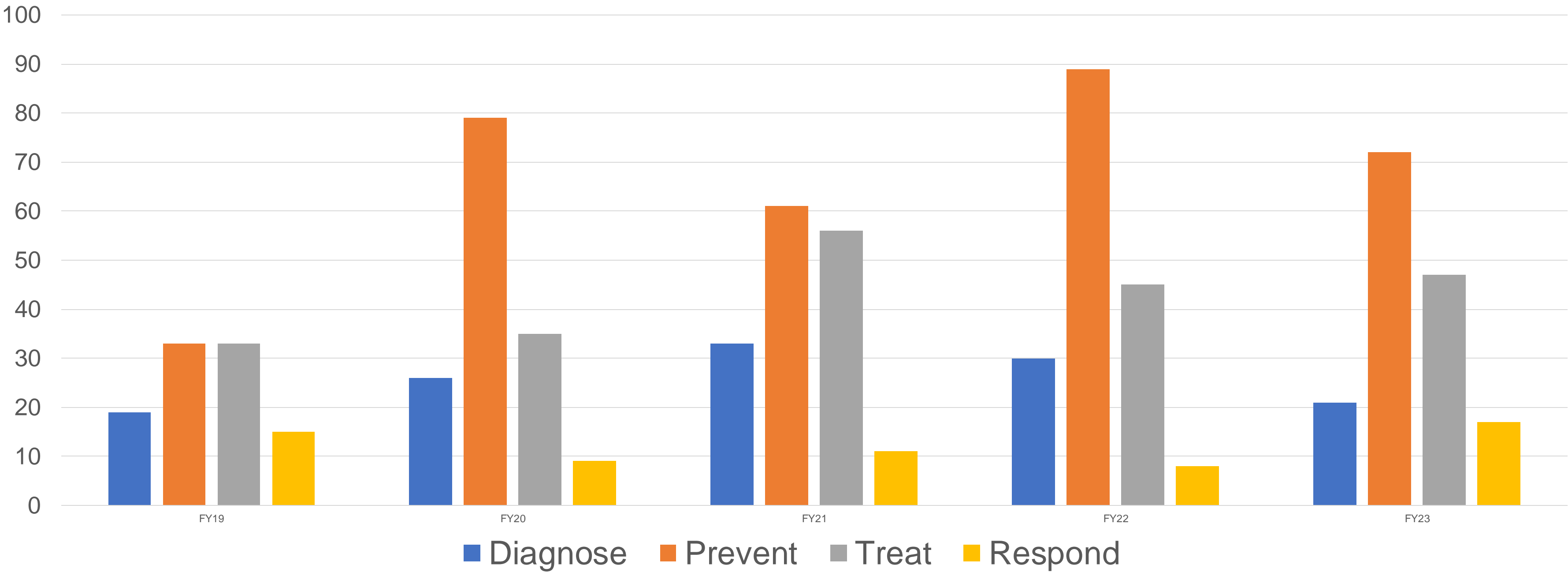


# EHE Projects Dashboard

The EHE Projects Dashboard is an interactive tool featuring the 248 EHE-funded supplement projects with the ability to filter across project characteristics.

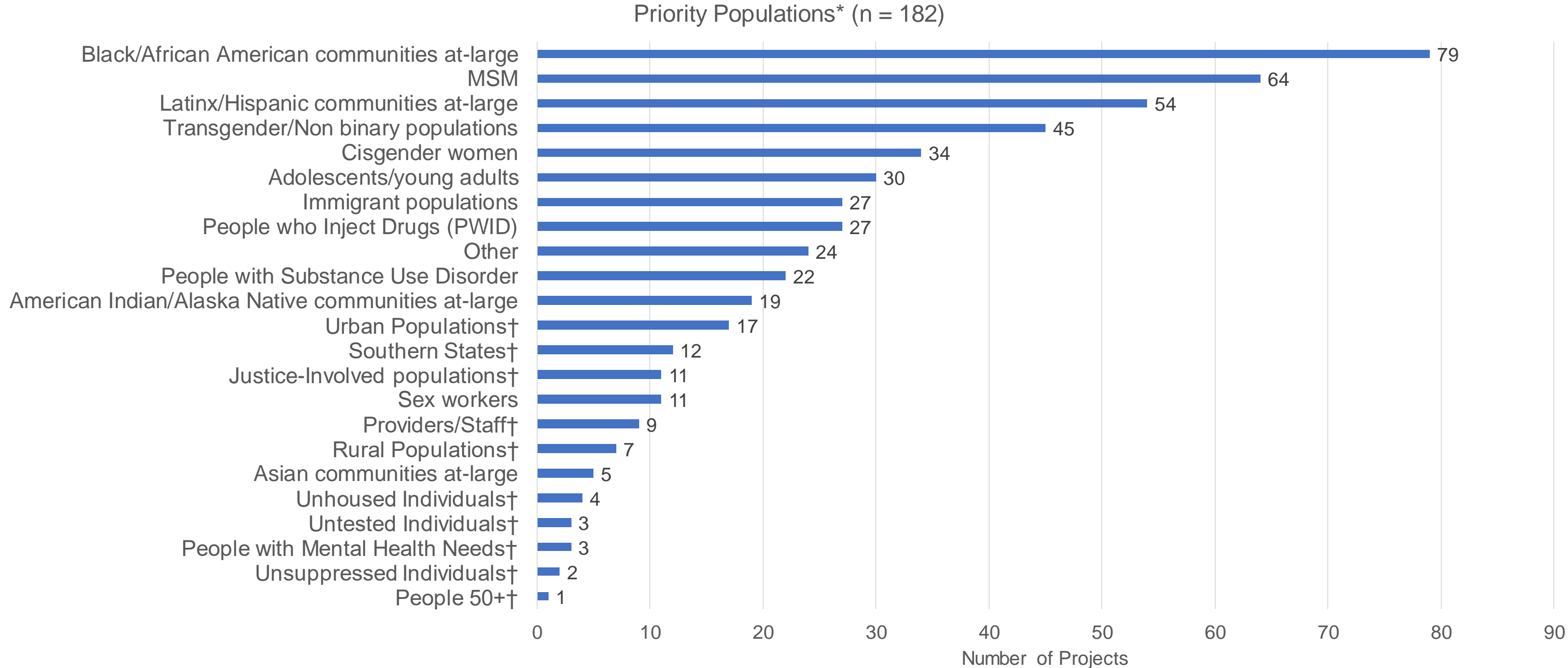


# EHE Projects, By Pillar (%)



\* Projects can select multiple pillars

# Priority Populations

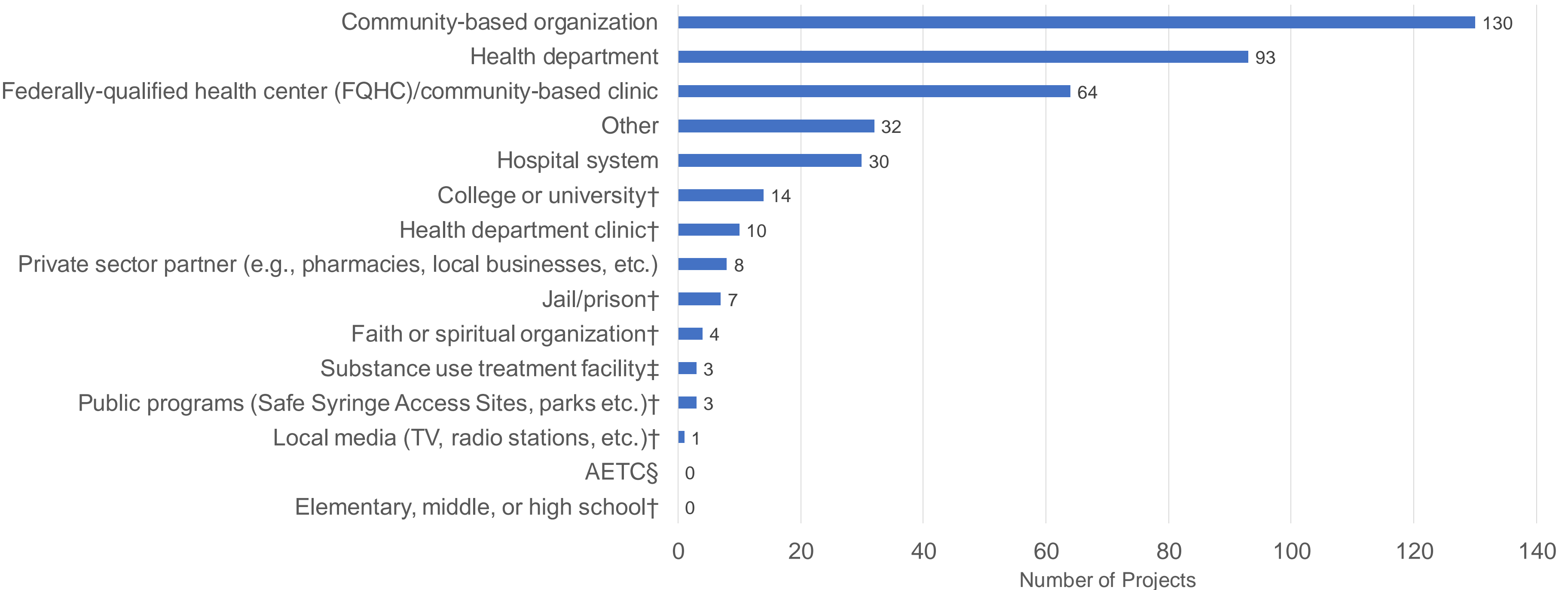


\*Reporting began in FY20, unless noted otherwise.

†Reporting began in FY23.



# Implementation Partner Types (n = 247)



\*Reporting began in FY19, unless noted otherwise.  
†Reporting began in FY20.  
‡Reporting began in FY21.  
§Reporting began in FY23.

# Publications & Presentations

	Total	2019	2020	2021	2022*
Publications	22	13	8	1	0
Presentations	47	8	16	23	0
In press	3	1	2	0	0
Under review	14	2	12	0	0
In preparation	31	10	21	0	0
Planning	12	2	10	0	0

\*No data has been received for FY22 projects due to No Cost Extensions

Data source: Projects end of study and followup surveys

# Project Spotlights

The JUNTOS Referral Network: Planning an Implementation Strategy to Enhance the Reach of HIV Prevention and Treatment Services to Latino MSM and Address Intersectional Insecurities



**“We hope that once this tool is available it will be something that can be widely used in the community and helpful to those who not only work in organizations but also that it becomes a resource that is known and shared among Latino MSM in Miami and beyond.”**



Audrey Harkness, PhD



Reducing HIV Among Women Living in Atlanta



**“We used our first year to do a lot of formative data collection within the 31 Title X family planning clinics across Atlanta’s four metro counties to really understand where they were at with PrEP and HIV testing within their clinical settings.”**



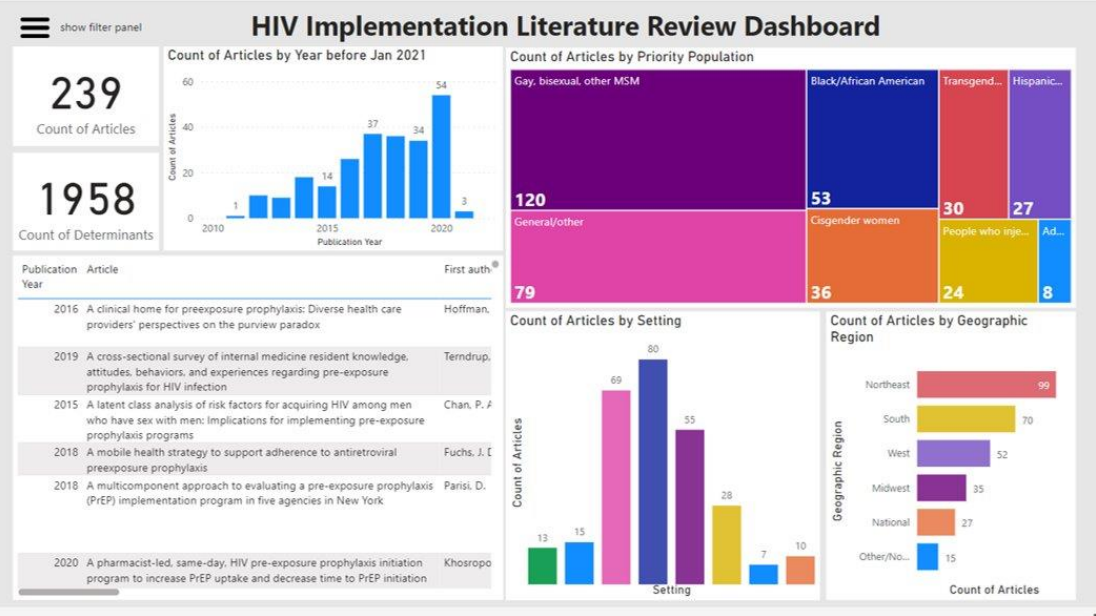
Jessica Sales, PhD





# Resources

## Literature Review Dashboard



## Grant Resources

**What Is Implementation Science and How Is It ...**

What Is Implementation Science and How Is It Helping to End the HIV Epidemic?

An Introduction to Implementation Science, Research, & Tools

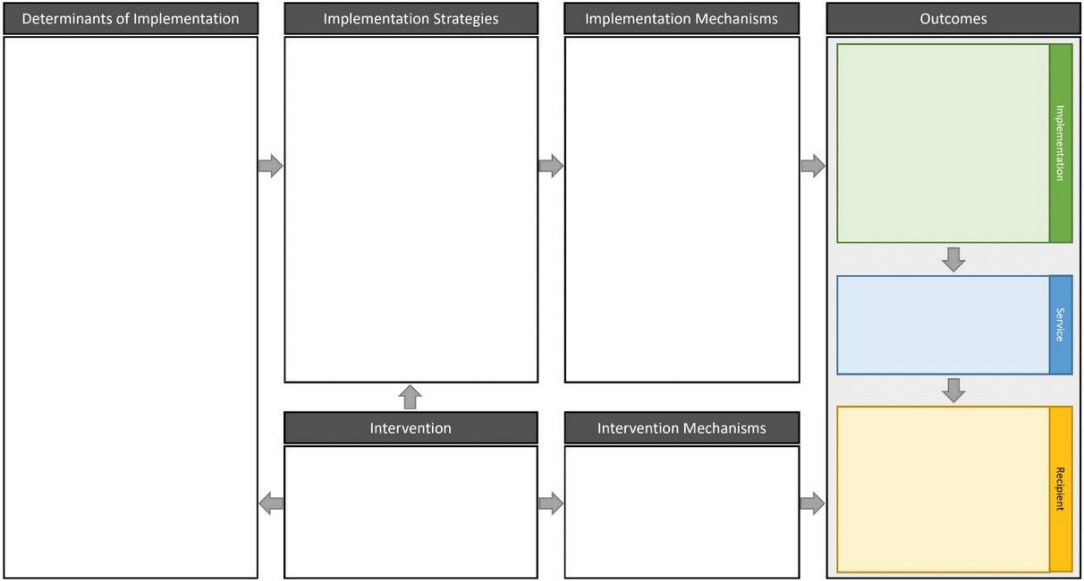
<https://hivimpsci.northwestern.edu/>

Logos: HIV Implementation Science, Northwestern, Institute for Sexual and Gender Minority Health and Wellbeing, hivimpsci.org



<https://hivimpsci.northwestern.edu/>

## Interactive IRLM Tool



## Outcomes Crosswalk

Lvl	Question	Standard Construct/Metric	General Considerations or Procedures	Importance by Stage of Research		
				Implementation Preparation	Piloting Strategy	Bringing to Scale
Patient	How many potential patients were reached by the intervention?	# potential patients in target health system or community <b>eligible</b> for the intervention -> <b>public health denominator</b>	Should reflect the scope of the project and approximate the # of patients that the intervention could potentially and feasibly touch across the entire health system or community. May use surveillance data, modeling, probability sampling, and other methods to estimate denominator.	N/A	If desired	Recommended
	How many potential patients were reached by the intervention?	# potential patients across sites <b>eligible</b> for the intervention -> <b>study denominator</b>	Total # of patients who could potentially and feasibly receive the intervention across sites that adopted the intervention. May be an estimate, but provide justification.	N/A	Required	Required
	How many potential patients were reached by the intervention?	# potential patients <b>aware</b> of the intervention	Applicability varies by intervention. May estimate via sampling.	N/A	If desired	If desired
	How many potential patients were reached by the intervention?	# potential patients <b>offered</b> the intervention		N/A	Required	Required
	How many potential patients were reached by the intervention?	# potential patients who <b>initiated</b> or were <b>provided</b> the intervention		N/A	Required	Required
	How <b>representative</b> are the patients who were reached of the population being targeted?	Characteristics of patients that receive the intervention vs. patients that do not	Use quant and/or mixed methods to compare based on individual characteristics and identified determinants (e.g., perceived risk, readiness), especially known disparities (e.g., age, race/ethnicity, insurance, gender, sex, urbanicity, transmission risk, homelessness, jail). May assess both participant and implementer perspectives.	N/A	Required	Required
Site	How <b>consistent</b> is reach across sites, implementers, and/or strategy(s)?	# patients excluded from receiving the intervention		N/A	Required	Required
	How <b>consistent</b> is reach across sites, implementers, and/or strategy(s)?	Reasons for excluding those patients		N/A	Required	Required
System	How <b>consistent</b> is reach across sites, implementers, and/or strategy(s)?	Reach rates by site, by implementer, and/or by recruitment strategy(s)	Use quant or mixed methods to compare based on site and implementer characteristics and/or strategy(s) targeting reach.	N/A	Recommended	Recommended
	How <b>consistent</b> is reach across sites, implementers, and/or strategy(s)?			N/A	Recommended	Recommended



# Training Opportunities

## (Next cohort applications fall 2024)



### Visiting Scholars Program

The visiting scholars program helps to strengthen academic-community partnerships that can conduct implementation research to help end the HIV epidemic

### POISE Training

The Practitioner-Oriented Implementation Science Education (POISE) training program is designed for HIV practitioners on implementation science

# Connect With ISCI

---

**ISCI Interchange**

Advancing Implementation Science, Ending the HIV Epidemic

