

DEPOSITING INTO NIH MANUSCRIPT SUBMISSION (NIHMS) SYSTEM

Why Should I Deposit My Manuscript into NIHMS?

The NIH Public Access Policy requires scientists to submit the final peer-reviewed, accepted manuscript that arises from NIH-funded research to PubMed Central (PMC) to ensure the public has access to the published results.

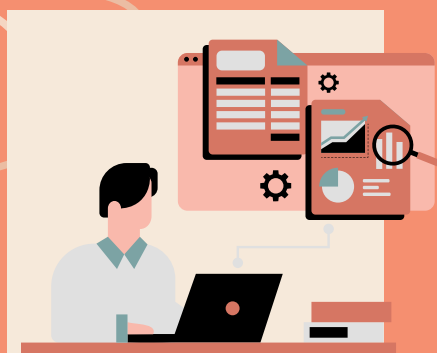
How Can I Deposit My Manuscript into NIHMS?

Journals may offer an automated, fee-based, or partial submission (review/ approval required) option to comply with the policy, but most publications must be deposited manually through the NIH Manuscript Submission system (NIHMS).

[Learn More](#)



Items For Manuscript Submission



Login information for your eRA Commons or My NCBI account to access the NIHMS system.



The final author version of the peer-reviewed, accepted manuscript (NOT the published PDF).



Don't forget any supplemental files including tables, figures, videos, etc.



Manual Submission Process

1 Start New Submission

Log in to NIHMS, and select the blue "submit new manuscript" button on the dashboard.

1

2 Import Citation Data

Import your citation from PubMed by entering your name, PMID, or title to help populate information in NIHMS.

2

3 Associate Funding

Search and add NIH grant award associated with the publication.

3

4 Deposit Manuscript

Upload all files associated with your publication in the appropriate sections, including tables, figures, videos, etc.

4

5 Review and Approve

Assign reviewer (e.g., author, submitter). Reviewer receives email to check and approve final submission.

5



Post-Submission Process

NIHMS Conversion

The submitted documents are converted into PMC-ready formats (Web and PDF versions). NIHMS notifies the reviewer when conversion is complete.

Final Approval Required

Log in to NIHMS, review the PMC-formatted Web and PDF versions, and approve them or request corrections.

Available in PubMed Central

The manuscript is made available in PMC following the embargo period (time publisher has exclusive rights to distribute the article).

Questions?

Contact EESanchez@mednet.ucla.edu or visit the CHIPTS website for more resources about publication compliance.

