

HOUSING — FOR — HEALTH

LOS ANGELES COUNTY DEPARTMENT OF HEALTH SERVICES

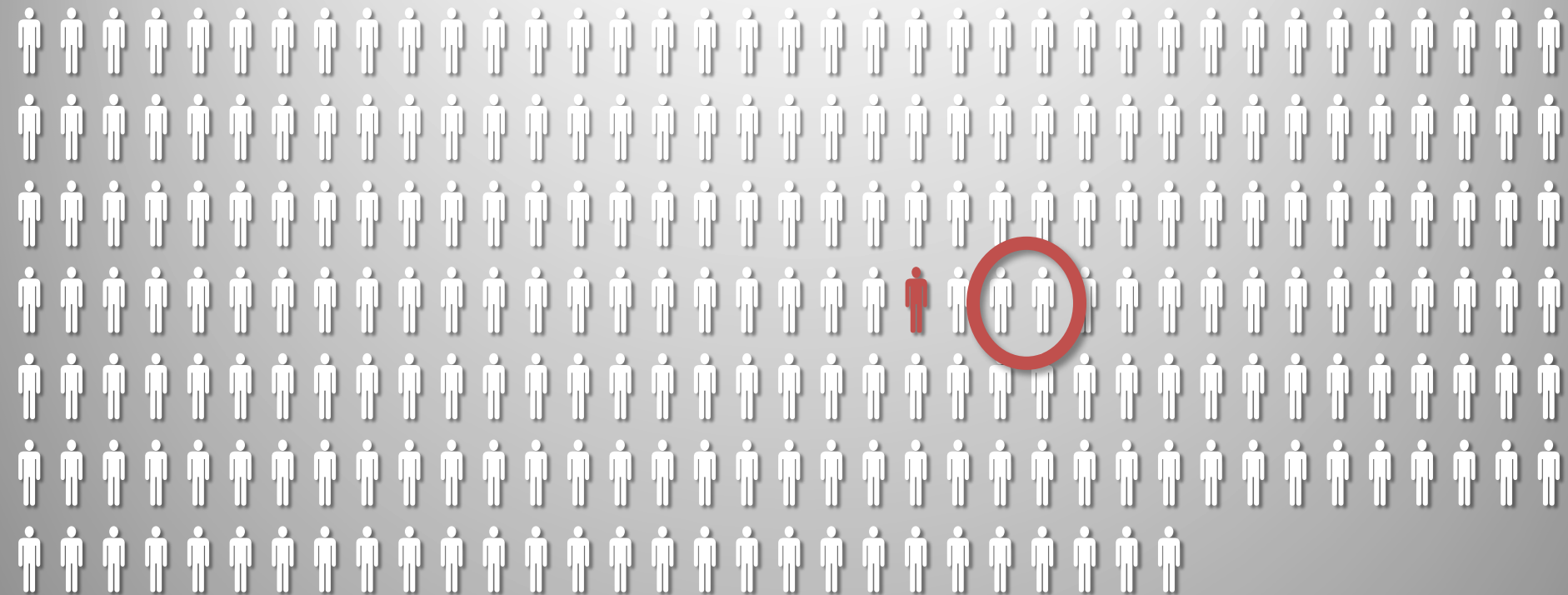
10,000 Units of Supportive Housing Linked to the Public Health System



Health Services
LOS ANGELES COUNTY

MARC TROTZ, DIRECTOR
mtrotz@dhs.lacounty.gov

MAGNITUDE



**57,737 people, or 1 OUT OF EVERY 250 RESIDENTS,
are homeless in LA County**

GOALS

- 1. Create 10,000 units of housing quickly**
- 2. End homelessness in LA County**
- 3. Reduce inappropriate use of expensive health care resources**
- 4. Improve health outcomes for vulnerable populations.**

WHY HOUSING MATTERS TO DHS

- **\$70 million/year** inpatient costs for homeless patients
- **\$32,000 year-over-year savings** following housing a DHS client
- **Reduction in hospital utilization** by homeless before and after housing:
 - **77% reduction** in emergency room visits
 - **77% reduction** in inpatient admissions
 - **85% reduction** in inpatient days

POPULATION

Homeless DHS patients with

- Complex physical and
- Behavioral health conditions

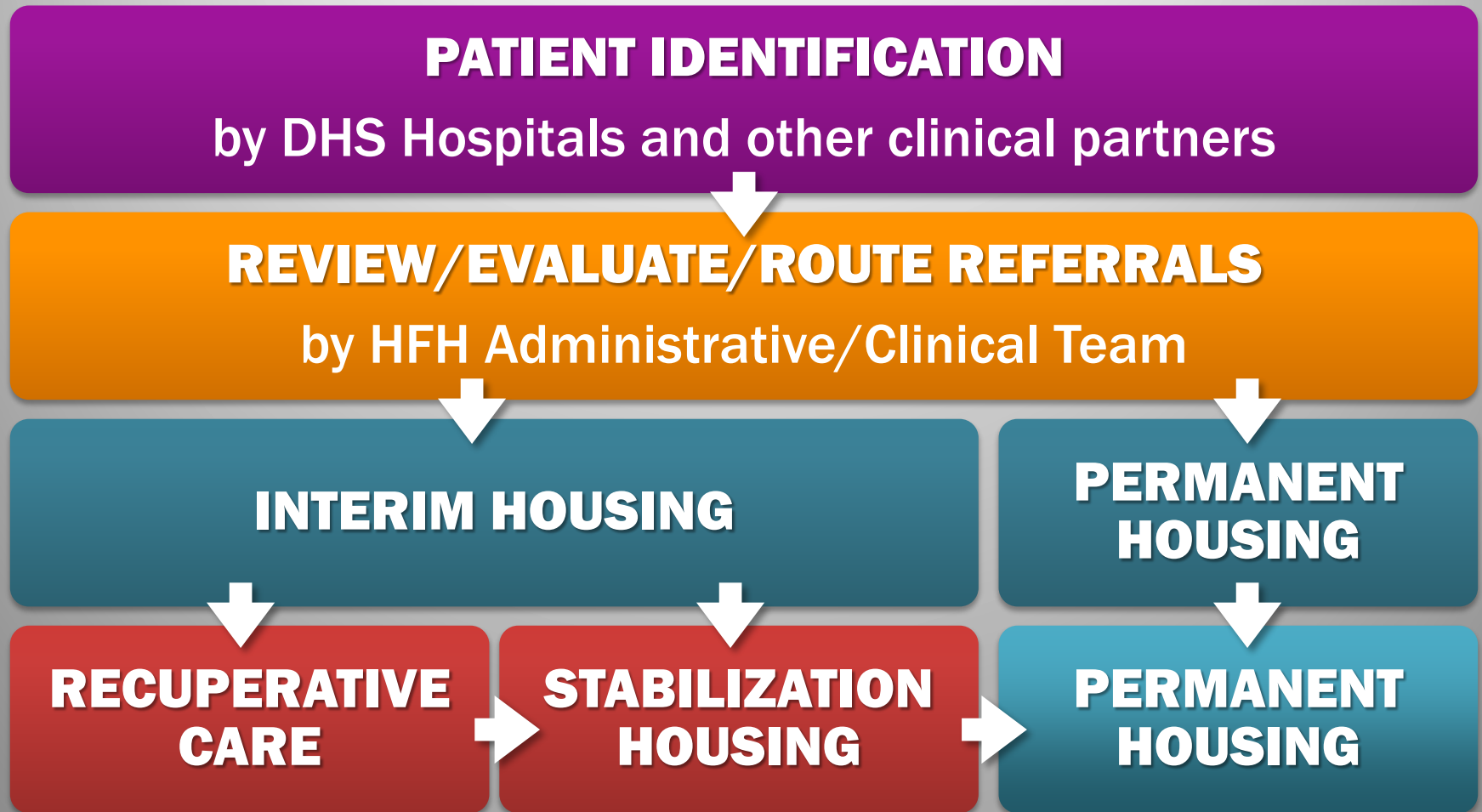
HEALTH OF CLIENTS

MOST COMMON CONDITIONS:

- Hypertension
- Diabetes
- Asthma
- Heart disease
- Congestive heart failure
- Cancer
- HIV/AIDS
- Hepatitis
- Depression
- Bipolar disorder
- PTSD

Most HFH clients have **MULTIPLE CHRONIC HEALTH CONDITIONS**

HFH CLIENT PROCESS



INTENSIVE CASE MANAGEMENT

- **Every client** connected to services.
- **Individualized service** planning and linkages to health, mental health, and substance use disorder services.
- **Help clients retain** housing and reach health and wellbeing goals.
- **Services provided by** on-site staff or mobile teams.

INTERIM HOUSING SOLUTIONS

Recuperative care

- Provides short-term care for homeless DHS patients who are recovering from an acute illness or injury or have conditions that would be exacerbated by living on the street or in shelter.
- Program offers temporary housing, medical and mental health monitoring, meals, case management, and transportation.

Stabilization Housing

- Provides short-term housing and support for homeless DHS patients who are moving into permanent housing soon.
- Program offers temporary housing, meals, case management, and transportation.

FLEXIBLE HOUSING SUBSIDY POOL




Health Services
LOS ANGELES COUNTY
FOR ANGELES COUNTY
HEALTH SERVICES

Conrad N. Hilton
FOUNDATION



**BRILLIANT
CORNERS**

NEW RENTAL SUBSIDY PROGRAM

- **Launched:** January 2014 by Housing for Health
- **Mission:** Quickly and effectively house homeless
- **Initial Funding:** \$18 million (w/ \$4 million from Conrad N. Hilton Foundation)
- **Housing Types:** Supportive; Affordable; Private market housing
- **Product Types:** SFHs; single apt. unit; blocks of units; entire building

FHSP PARTNERS



Los Angeles County
Dept. of Health
Services



503(c) nonprofit
coordinating community-
based partner



Property owners
throughout Los
Angeles County



LADHS Supportive
Housing Rental
Subsidy Program

HOW FHSP WORKS

1

Landlord notifies Brilliant
Corners of available unit(s)

2

Brilliant Corners negotiates lease
terms for one or more units

3

Brilliant Corners works with DHS and
case managers to identify tenants

4

Brilliant Corners coordinates lease signing,
security deposit, rent payment, and move-in

5

Tenant receives on-going housing
retention and case management service

RENTAL SUBSIDIES GOALS



SELECTED HFH PROJECTS



Health Services
LOS ANGELES COUNTY

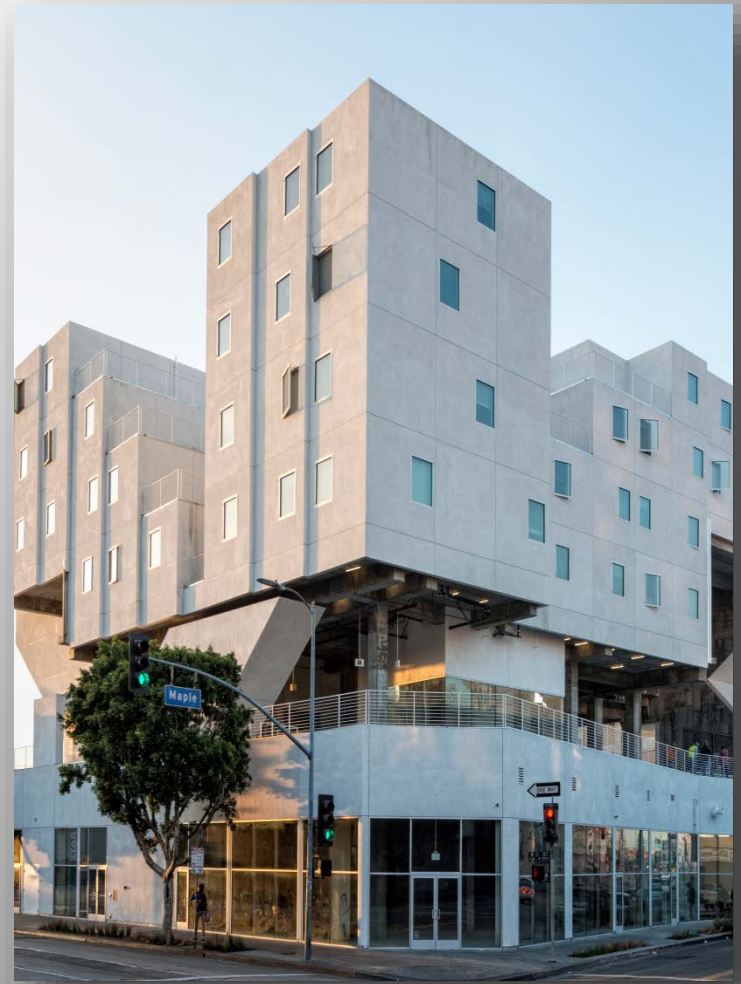
NEIGHBORHOOD STABILIZATION PROJECT

- **South Los Angeles**
- **Scattered site** program
 - 15 newly renovated properties
 - 56 total units
- **Acquired/renovated w/ NSP funding** in partnership with City of LA Housing Agencies
- **Support Services** provided by Housing Works



THE STAR APARTMENTS

- **Downtown Los Angeles**
- **100-unit innovative housing** complex w/ modular pre-fabricated units
- **Owned by Skid Row Housing Trust** with onsite support services
- **15,000 sq. ft. of outdoor community space** (track, basketball, garden, kitchen, wellness center)
- **Future home of HFH primary care clinic** specializing in integrated health care for homeless DHS patients



THE ALEXANDRIA

- **Downtown Los Angeles**
- **Iconic landmark** once hosted Charlie Chaplin & Humphrey Bogart
- **Studio / Micro-Loft Apartments**
- **90 units for DHS patients** through FHSP
- **Support services** provided onsite by LAMP Community



HOUSING — FOR — HEALTH

LOS ANGELES COUNTY DEPARTMENT OF HEALTH SERVICES



Health Services
LOS ANGELES COUNTY

MARC TROTZ, DIRECTOR
mtrotz@dhs.lacounty.gov