



Making a difference in health: Focus on the Environment, Not Only the Individual



Marguerita Lightfoot
UCLA HIV Grand Rounds



SCHOOL OF
PUBLIC HEALTH

Outline



01

PUBLIC HEALTH JOURNEY



02

YOUTH EXPERIENCING HOMELESSNESS



03

STI/HIV SCREENING



04

NEW STUDIES



SCHOOL OF
PUBLIC HEALTH

Outline



01

PUBLIC HEALTH JOURNEY



02

YOUTH EXPERIENCING HOMELESSNESS



03

STI/HIV SCREENING



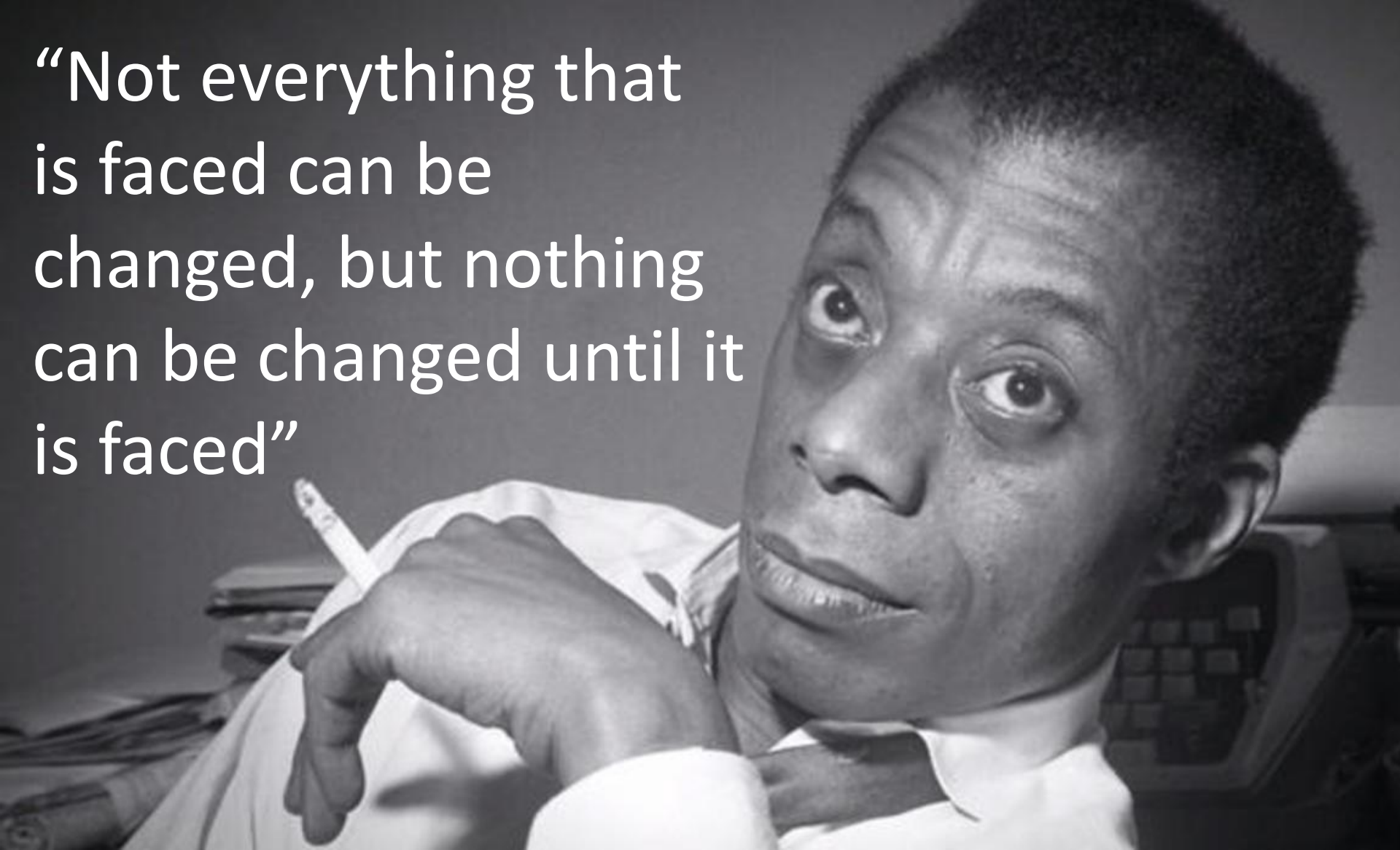
04

NEW STUDIES



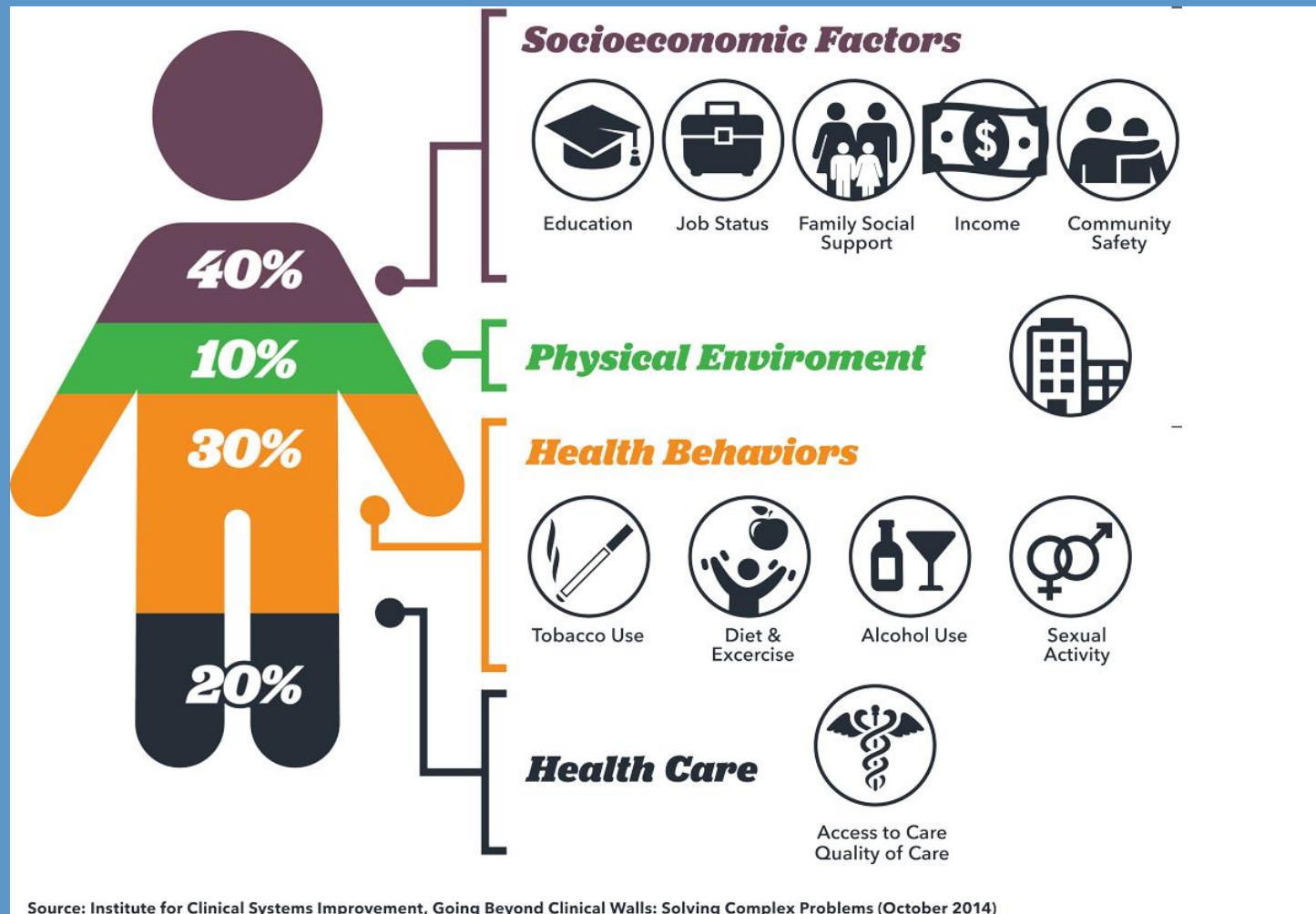
SCHOOL OF
PUBLIC HEALTH

“Not everything that
is faced can be
changed, but nothing
can be changed until it
is faced”



SCHOOL OF
PUBLIC HEALTH

Determinants of Health Status

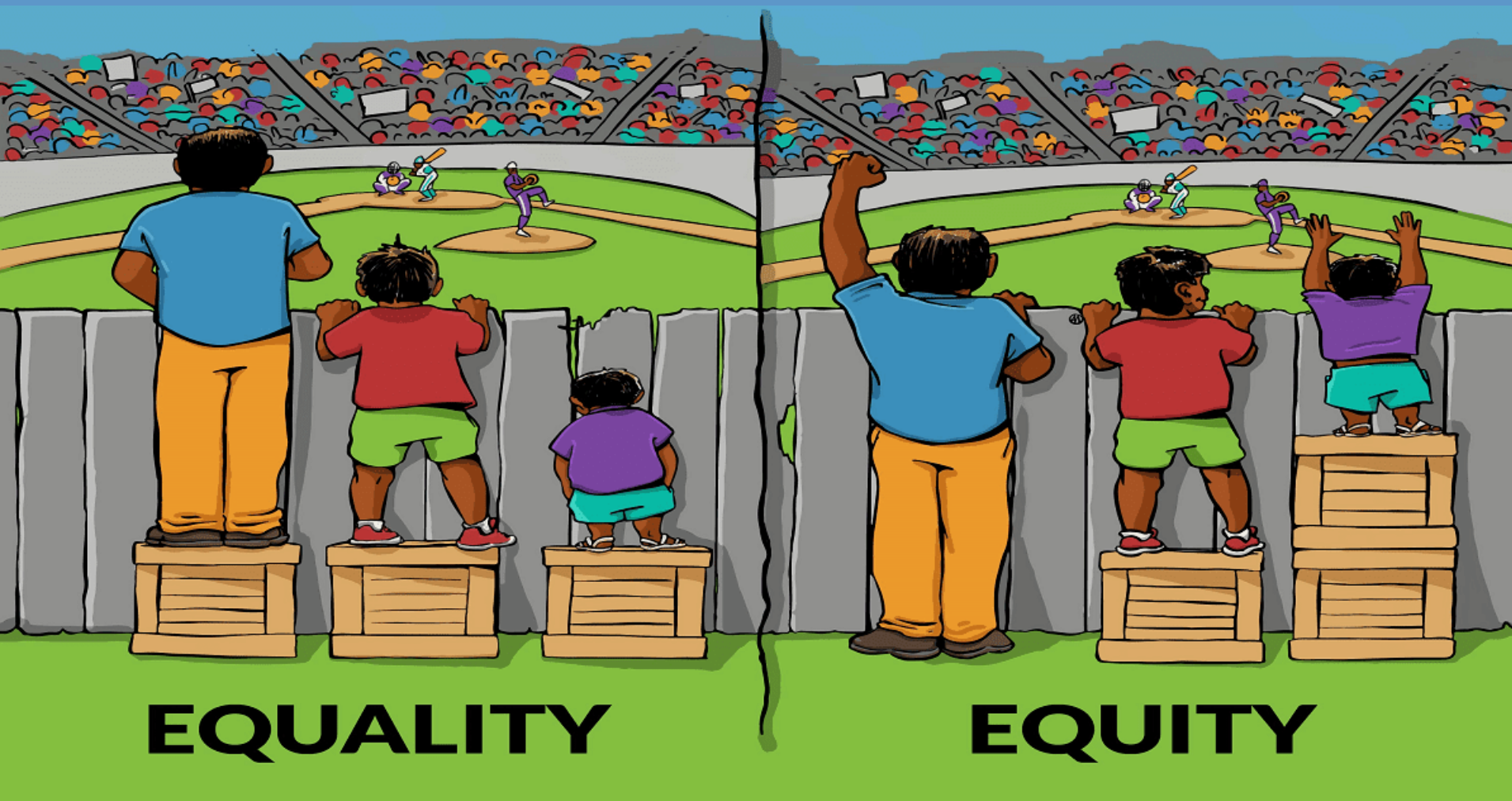


50% can be traced back to your zip code!

Only 20% include those moments in a healthcare environment



SCHOOL OF
PUBLIC HEALTH



SCHOOL OF
PUBLIC HEALTH



SCHOOL OF
PUBLIC HEALTH

Outline



01

PUBLIC HEALTH JOURNEY



02

YOUTH EXPERIENCING HOMELESSNESS



03

STI/HIV SCREENING



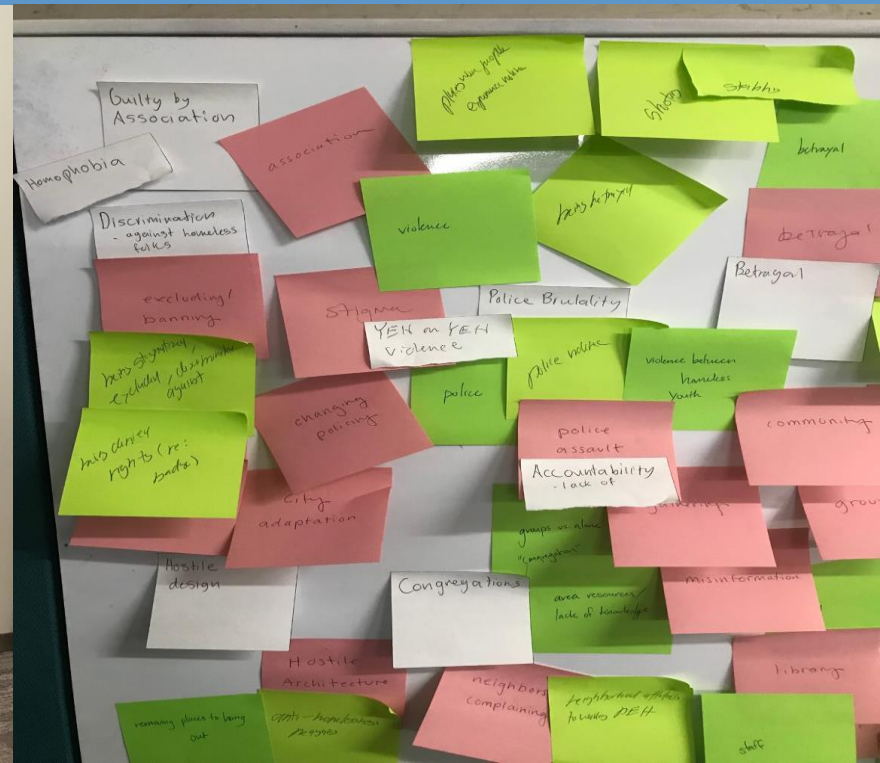
04

NEW STUDIES



SCHOOL OF
PUBLIC HEALTH

Collaborative data analysis



Research Design

Interviews

Walking tours
of key
neighborhoods



Photos

Photos of
important
places



Location

Geolocation
data of
important
places

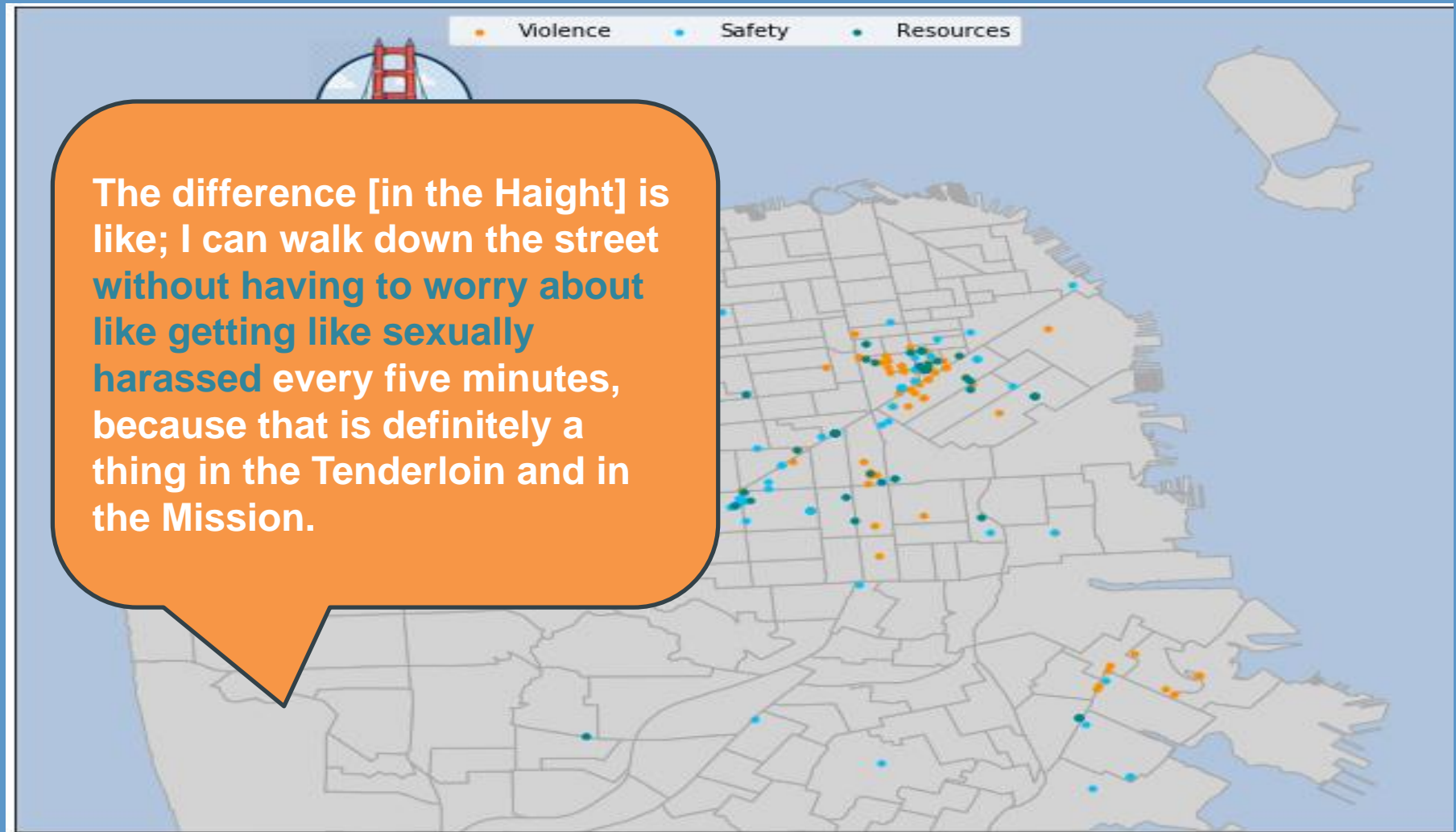


Police Data

Analyze SFPD stops
of 18-24 year olds
during 2017-2019



Youth sacrifice safety to access housing and services



SCHOOL OF
PUBLIC HEALTH

Youth don't have access to basic needs

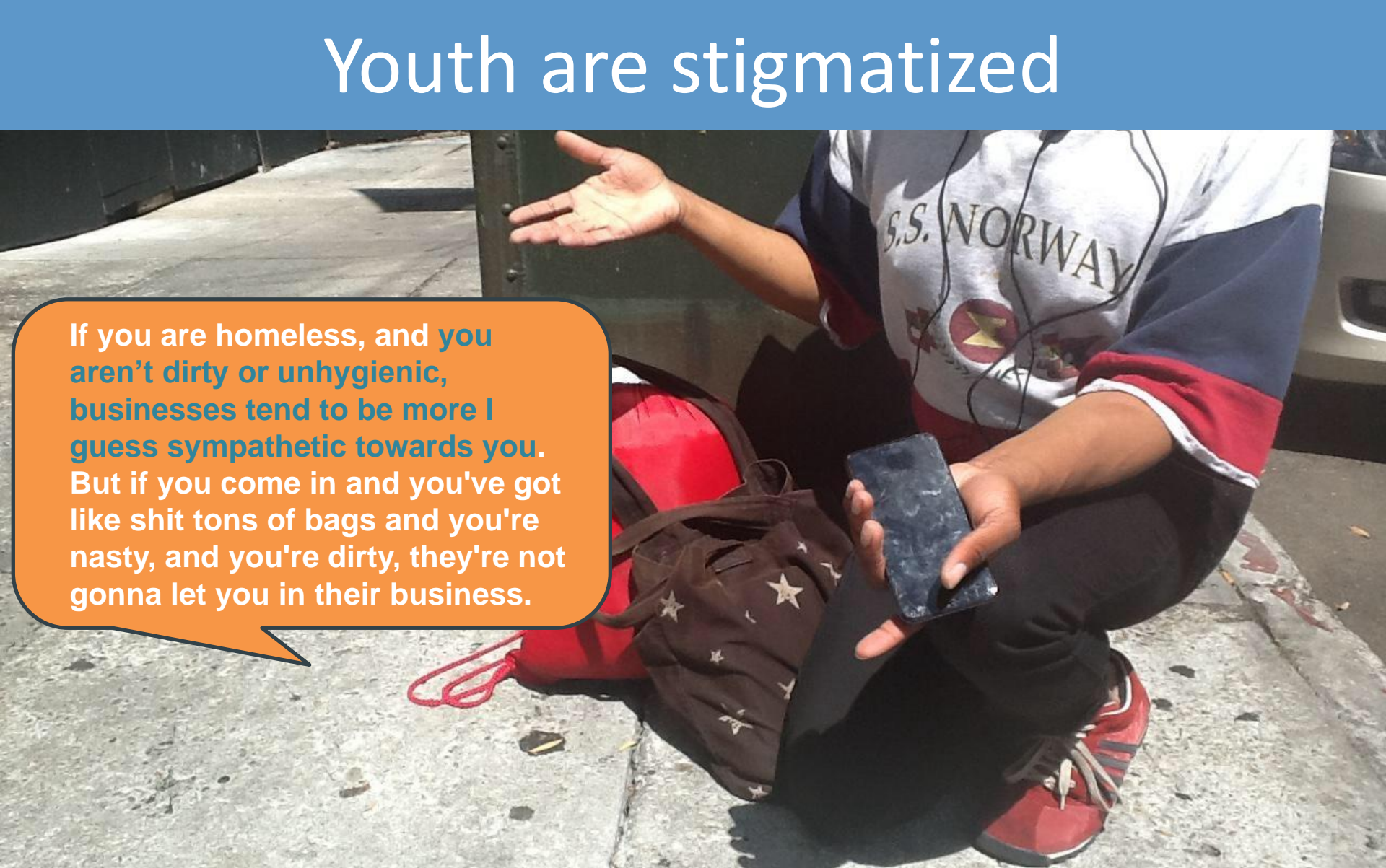


They really don't like it when you have access to power and water and shit like that. You know, I don't know why. It seems like everybody should be able to have that, you know? Anytime they see anywhere where street people or whatever have **access to like an outlet or water or whatever**, they hate that, you know, so they usually get rid of it.



SCHOOL OF
PUBLIC HEALTH

Youth are stigmatized

A photograph of a person crouching on a concrete sidewalk. They are wearing a white and blue baseball jersey with "U.S. NORWAY" printed on it, black pants, and red sneakers. They are holding a black smartphone in their left hand and showing their right palm, which has a yellow substance on it. A brown bag with white stars is on the ground next to them. An orange speech bubble is overlaid on the left side of the image.

If you are homeless, and you aren't dirty or unhygienic, businesses tend to be more I guess sympathetic towards you. But if you come in and you've got like shit tons of bags and you're nasty, and you're dirty, they're not gonna let you in their business.



SCHOOL OF
PUBLIC HEALTH

Youth are criminalized



They put up a 'No Loitering' sign at the park. There's a No Loitering sign at the PARK. What the fuck are you supposed to do in a park? Loiter!



SCHOOL OF
PUBLIC HEALTH

Those supposed to help sometimes hurt



[Police] are not safe at all. I went to a police station like three times and they were unable to help me all three fucking times

Law Enforcement

Random violence

Neglect to protect youth

Excessive Force

Deny access to possessions



SCHOOL OF
PUBLIC HEALTH

Those supposed to help sometimes hurt



I only know of a couple case managers that actually do their job, and kinda help keep the people safe. And that's only like two, like two case managers that I know of that does that. But those who are like –I don't know if they know what it's like to struggle, but like **other case managers**, they really are no help.

Service Providers

- Some welcoming and humanizing
- Some disrespectful, aggressive and paternalistic
- Allow or deny access to basic needs
- Broken or absent systems of accountability



SCHOOL OF
PUBLIC HEALTH

Police stops of youth, 2017-2019

Physical 2184 stops

Highest in Spring & Summer

Highest Weekday

Whites	11%
Hispanic	31%
Black	48%
API	6%
Other	3%

Males	74%
-------	-----

Bayview	36%
---------	-----

Property 1068 stops

Highest in Winter & Spring

Highest Weekday

Whites	21%
Hispanic	20%
Black	53%
API	4%
Other	2%

Males	80%
-------	-----

Tenderloin	31%
Bayview	30%

Drug Possession 1109 stops

Highest in Spring

Highest Weekday

Whites	15%
Hispanic	64%
Black	16%
API	1%
Other	4%

Males	88%
-------	-----

Tenderloin	71%
------------	-----

Homelessness 827 stops

Lowest in Winter

Highest Weekday

Whites	32%
Hispanic	18%
Black	43%
API	4%
Other	3%

Females	56%
---------	-----

Mission	65%
---------	-----



SCHOOL OF
PUBLIC HEALTH

Outline



01

PUBLIC HEALTH JOURNEY



02

YOUTH EXPERIENCING HOMELESSNESS



03

STI/HIV SCREENING



04

NEW STUDIES



SCHOOL OF
PUBLIC HEALTH

Text Intervention

5 messages to
sexually active
friend

Youth generated
messaging

Guidance informed
by Social Cognitive
Theory



Icon made by Good Ware from www.flaticon.com



SCHOOL OF
PUBLIC HEALTH

Recruitment

Approached
153

Consented
66%

Refused
18%

Ineligible
16%

Sent 5 texts
81%

Sent > 5
18%

Post-test
91%

Messages Sent



Calls to Action
87%

Direct

“Hey friends/Fam having unprotected sex? You should take the time to visit 3rd st youth clinic

Passive

”At the 3rd street clinic their giving free STD as well as HIV testing you can find your status out today”



Personalized Mess
81%

“Hey if you are
somebody who
jst need someone to talk to. Go visit third
street youth clinic and Center they have
excellent services for youth up to the age of
24

“Ay bruh you know your status you could come down to 3rd street and get checked make sho you straight.”



Clinic Information
69%

“hey I went to 3rd st clinic today, you should come get checked to be sure they're very helpful & show alot of support.”

“hey I went to 3rd st clinic today, you should come get checked to be sure they're very helpful & show alot of support.”



Self Disclosure/Positive Exp
55%

HEALTH

Responses

“Are you finna be a daddy?”

“Lmfao. Nice. Okay well when I get home”

“Bitch what you telling me for? I go to my dr. every 3 months for the free and I damn sho aint got HIV”

“Are you ok”

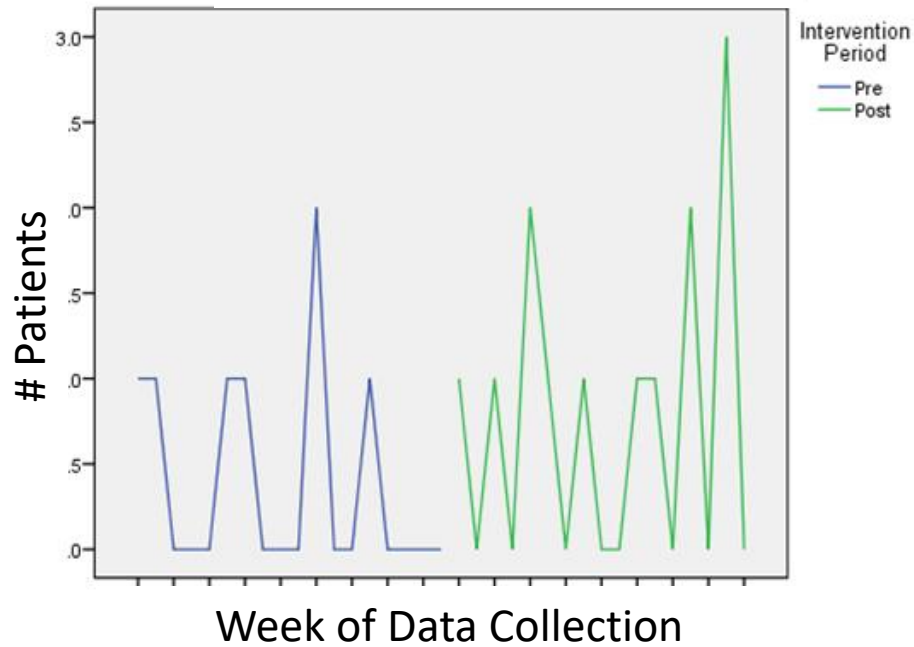
“lol.What? That was hecca random”

“Fa sho.What time it ends? I get out @ 4”

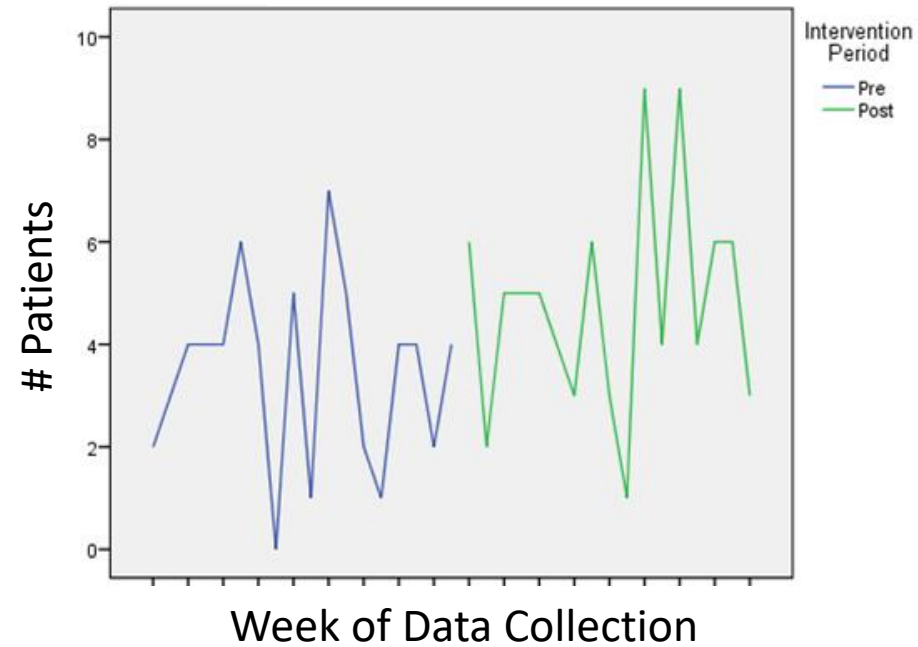


SCHOOL OF
PUBLIC HEALTH

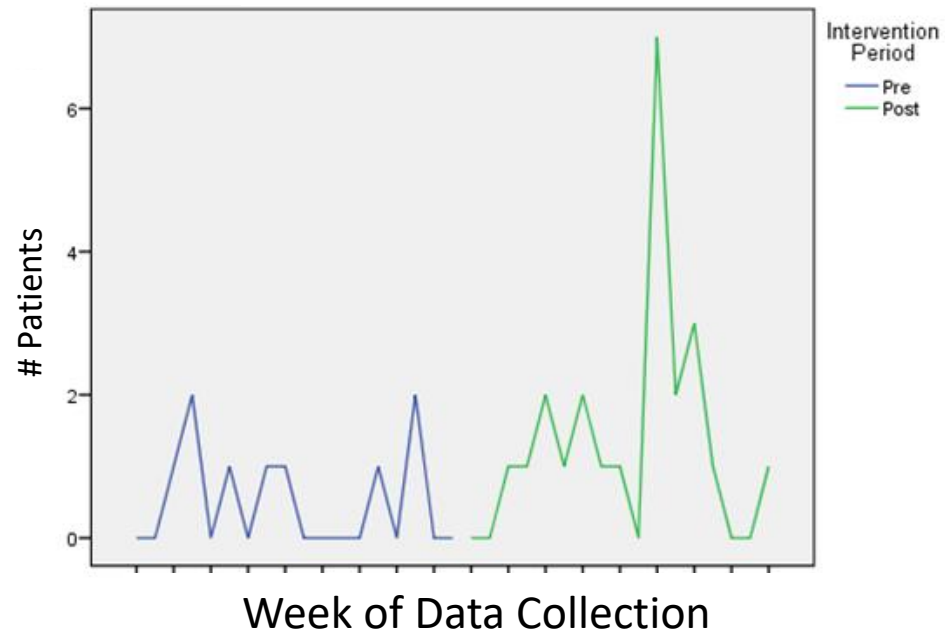
Positive STI



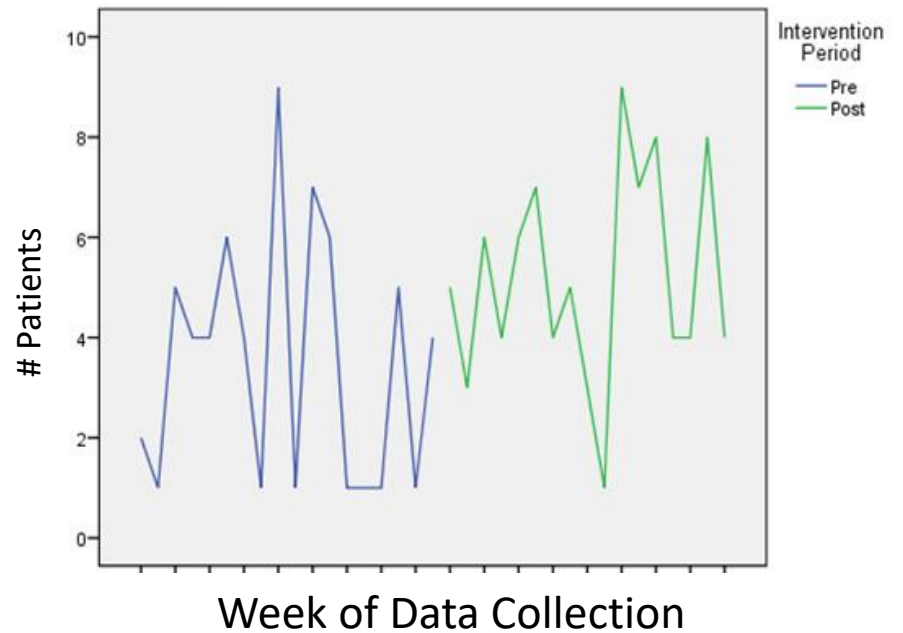
High Risk



HIV



STI



Mobile Opportunity

Africa has surpassed...

Europe in the number of mobile phones

U.S. in number of cell phone users



SCHOOL OF
PUBLIC HEALTH

Example Texts

“hey sup ! I want you to come to the SHAZ! HUB at Citimed hospital.They have a lot of educative programs for young people”

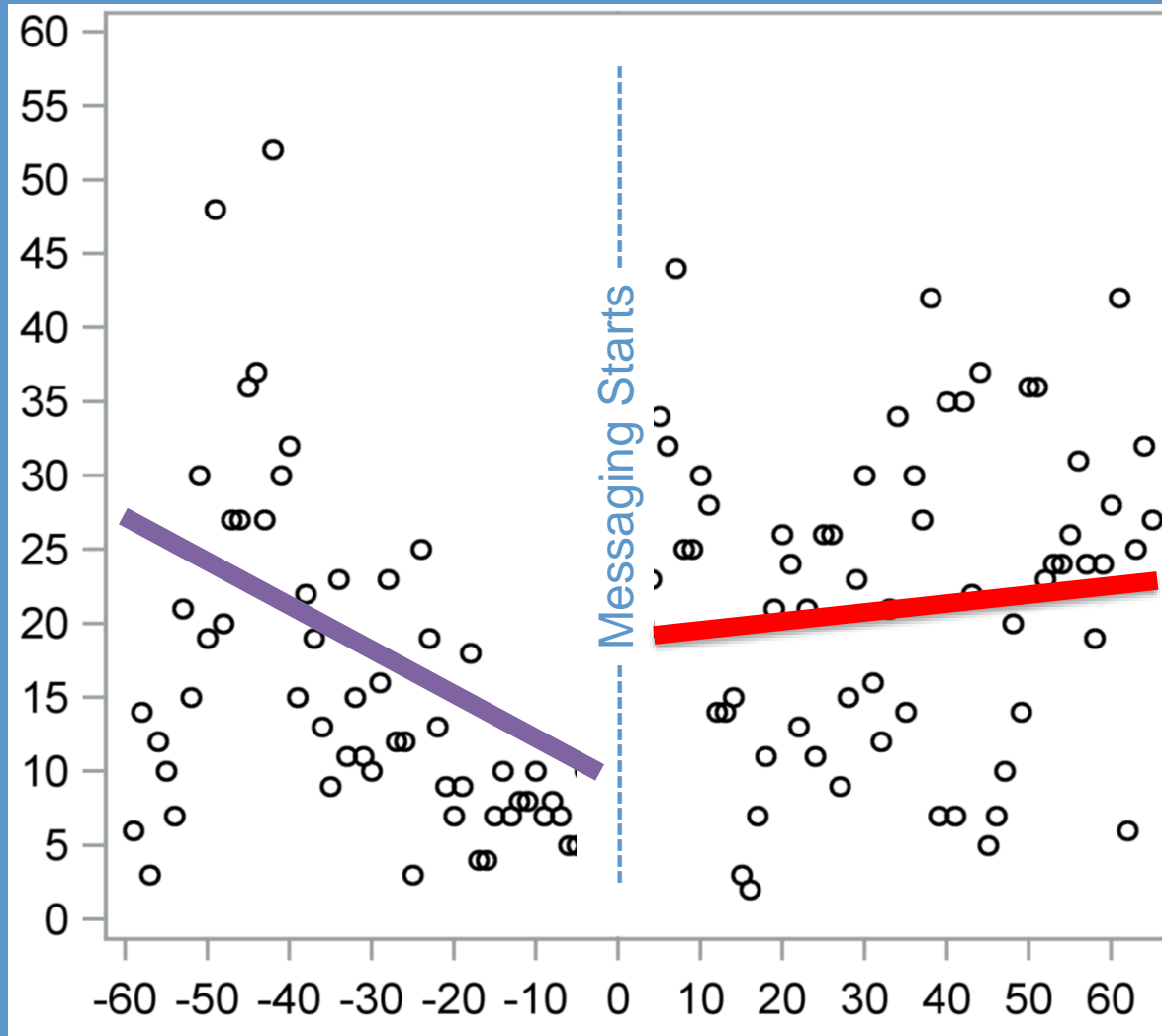
“Boss boss. How are you? There's a fun place here for young people aged between 16-24.Would you like to come?”

“My friend. Please come to the SHAZ!HUB at Citimed and get tested for free.They also have other programs for young people”

“How are you my friend, im inviting you to come with me im going for a youth program called SHAZ.”



Number of New Patients Tested for HIV



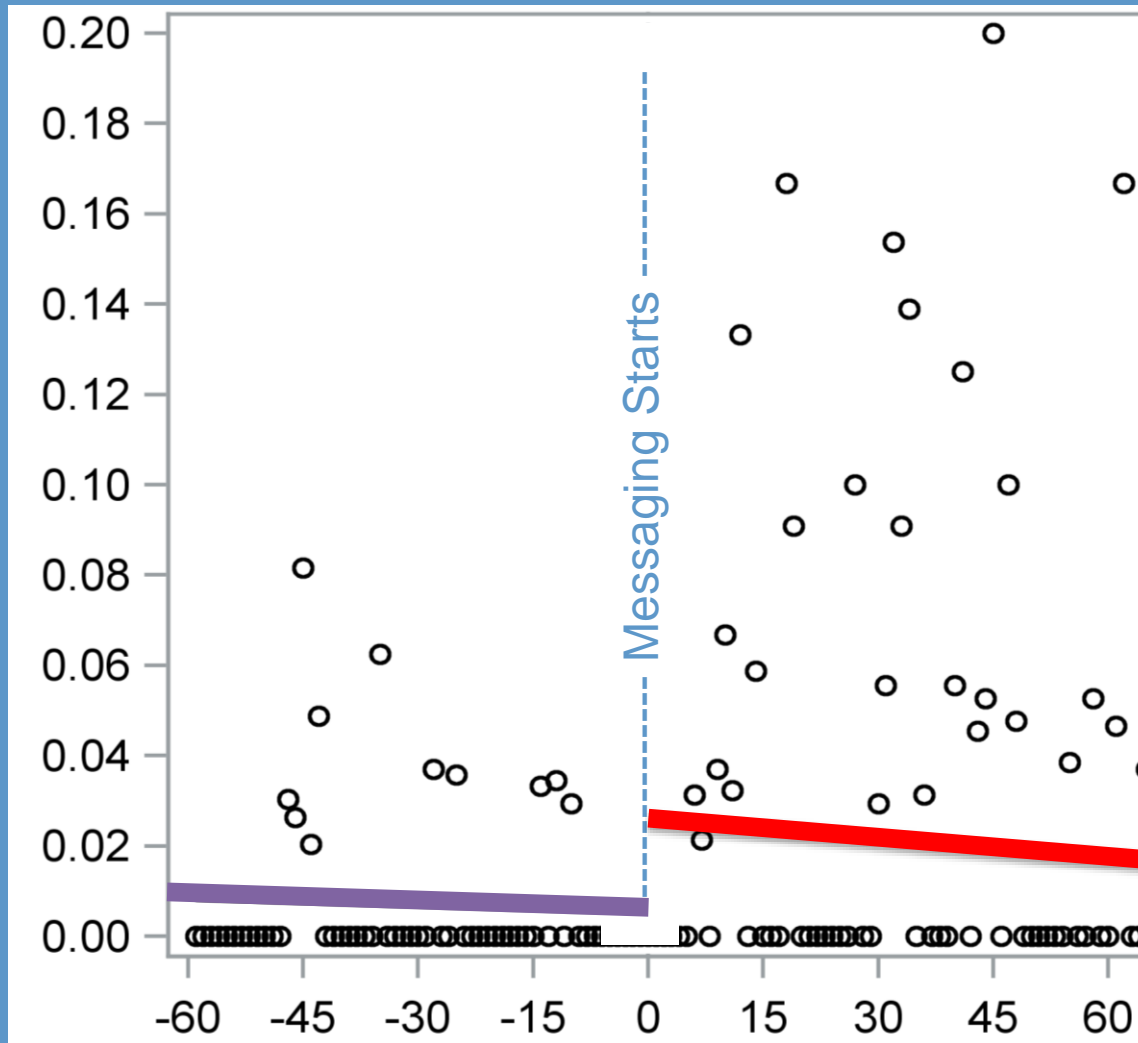
Doubling of the predicted count of new patients getting tested for HIV

(FC=2.06, 95% CI 1.37-3.12, $p=.0008$)



SCHOOL OF
PUBLIC HEALTH

Proportion of New Patients Testing for HIV positive



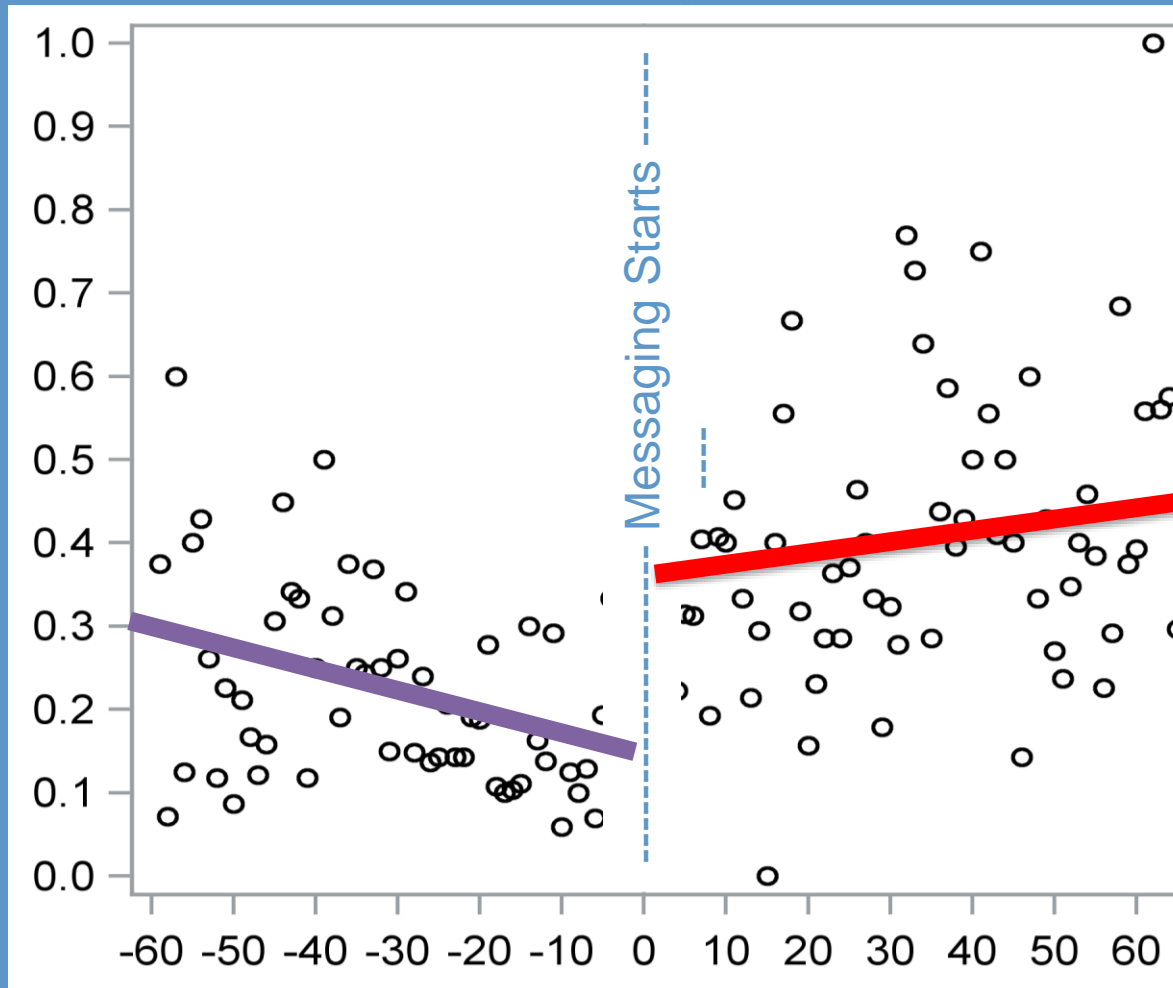
5 times higher at
intervention
onset than
immediately prior

(OR=4.84, 95% CI 1.27-
18.47)



SCHOOL OF
PUBLIC HEALTH

Proportion of New Patients with Sexual Risk



3 times than
immediately
prior to
intervention
onset

(OR=3.24, 95% CI 1.71-
6.13, $p=.0005$)



SCHOOL OF
PUBLIC HEALTH

Outline



01

PUBLIC HEALTH JOURNEY



02

YOUTH EXPERIENCING HOMELESSNESS



03

STI/HIV SCREENING



04

NEW STUDIES



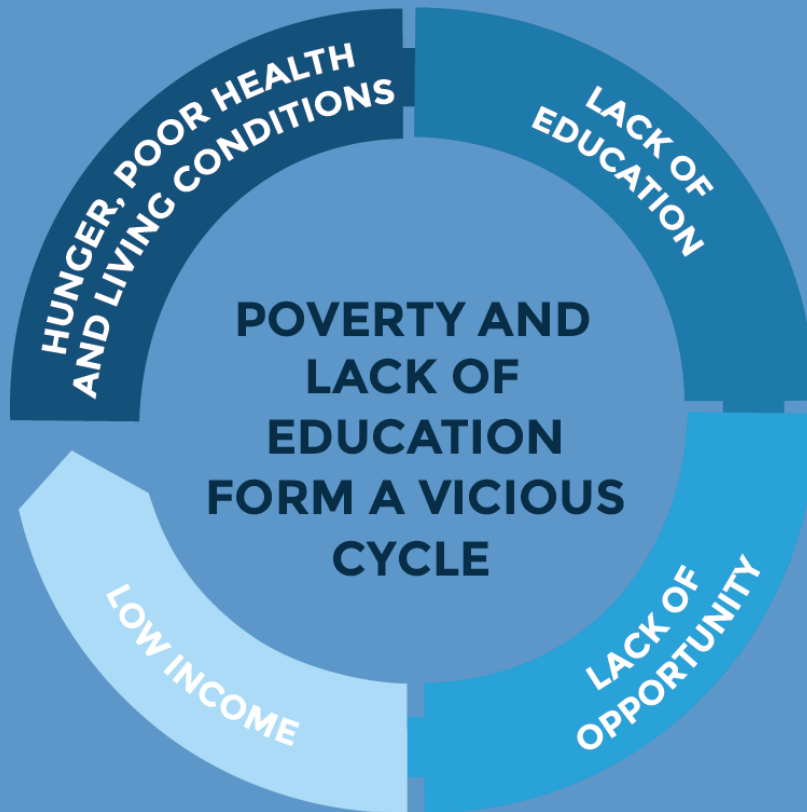
SCHOOL OF
PUBLIC HEALTH

Increasing
financial and
health equity
among low
income black
youth and
young adults



SCHOOL OF
PUBLIC HEALTH

Guaranteed Income



01

Cash transfer with no conditions provided on a consistent basis.

Flexibility, stability and freedom so people can identify and meet their needs.

02



SCHOOL OF
PUBLIC HEALTH

**'If wealth was the inevitable result of
hard work and enterprise, every woman
in Africa would be a millionaire.'**

— George Monbiot



David Avocado Wolfe



SCHOOL OF
PUBLIC HEALTH

Premise

Guaranteed income (GI) in adults

- ↓ Anxiety and depression
- ↑ Investment in the future
- ↑ Health seeking & service utilization

❓ Impacts on Black youth

! Immediate policy impact

- ✓ Economic Security Project (2016)
- ✓ Mayor's For Guaranteed Income (2020)



SCHOOL OF
PUBLIC HEALTH

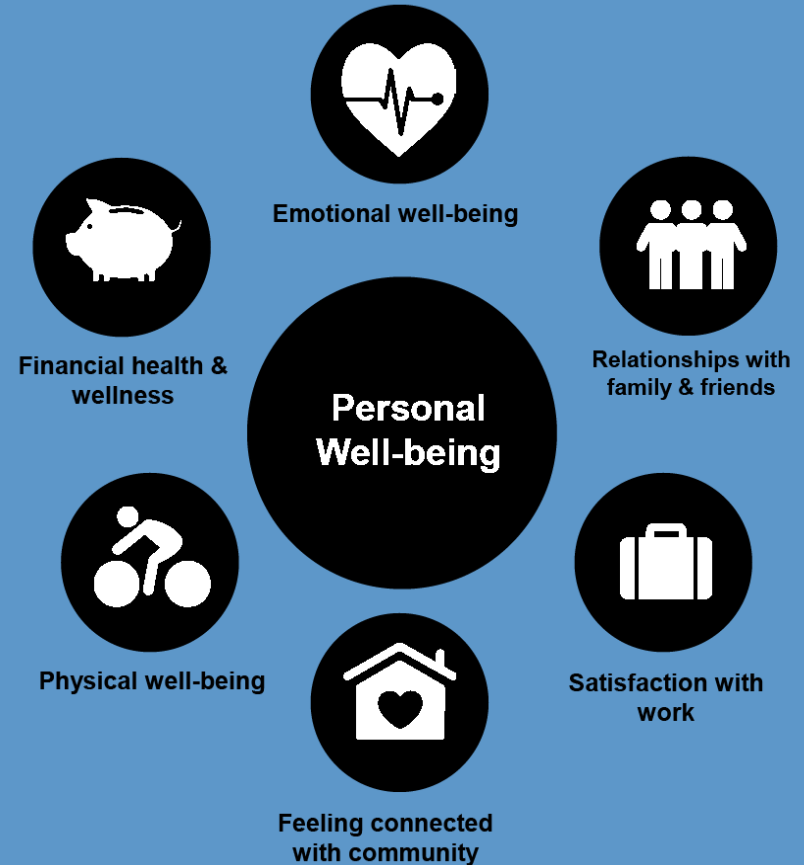
Study Aims

Determine the impact of GI
on three related outcomes

1. Financial Well-being
2. Mental health
3. Utilization of Mental Health and SRH services

Examine whether the
benefits of GI could be
accelerated by providing
additional financial capability
supports

1. Peer learning circles
2. Financial coaching



SCHOOL OF
PUBLIC HEALTH

Eligibility

Aged 18 – 24 years at time of enrollment

Not be a participant in any other GI program

Identify as Black

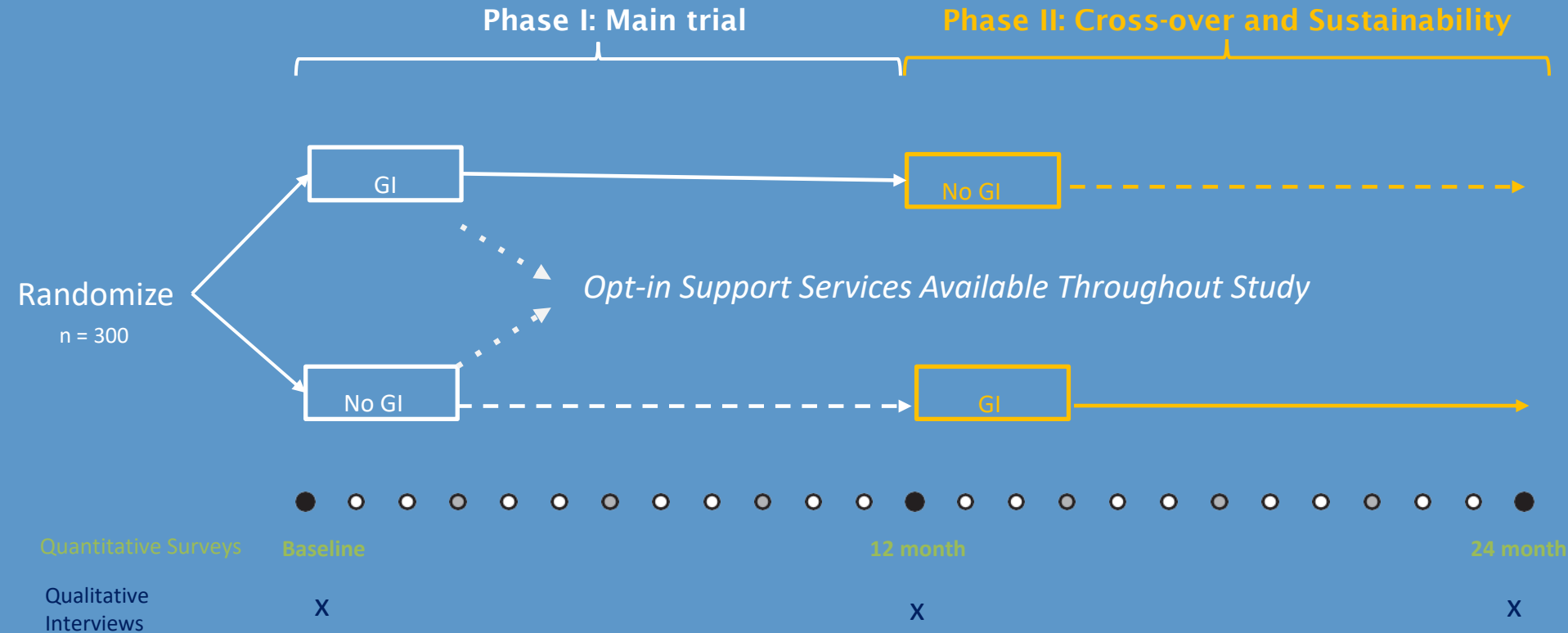
Lived in the United States for at least 3 years

Live in a low-income or very low income census tract in San Francisco or Oakland



SCHOOL OF
PUBLIC HEALTH

Randomized Controlled Crossover Design



SCHOOL OF
PUBLIC HEALTH

Recruitment & Enrollment



Recruitment

Outreach through agencies, flyers, social media



Eligibility confirmation & Drawing

Interested youth complete a webform to indicate interest & initially confirm eligibility

Phone screening to confirm eligibility

Drawing (weighted to ensure gender, age, and location balance)



Enrollment

Consent, Contact info, Survey, Fin Cap introduction, Focus Card



SCHOOL OF
PUBLIC HEALTH

Identifying Potential Harms

Taxes

Public Benefits

Social Pressure/Coercion



SCHOOL OF
PUBLIC HEALTH

Whole Family Wellness



Whole-Family Wellness for Early Childhood:

A New Model for
Medi-Cal Delivery
and Financing

CONCEPT PAPER
September 2019



FIRST 5 CENTER FOR
CHILDREN'S POLICY

More than two thirds of youth experience a traumatic event by age 16

Health system fragmentation usually dictates separate and poorly coordinated care for youth and adults

Current legislative policy and budget priorities present an opportunity to innovate clinical care models

Using a whole family approach builds on family and community strengths and resilience



SCHOOL OF
PUBLIC HEALTH

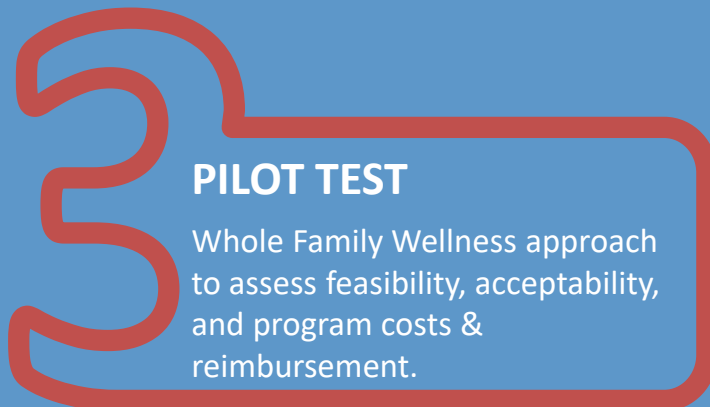
Specific Aims



QUALITATIVELY EXPLORE
Existing approaches to whole family wellness and resilience



CO-DESIGN
A scalable and sustainable Whole Family Wellness approach to addressing trauma and resilience



PILOT TEST
Whole Family Wellness approach to assess feasibility, acceptability, and program costs & reimbursement.



SCHOOL OF
PUBLIC HEALTH

Intervention Development



Patients (N=50)

- Adolescents
- Caregivers



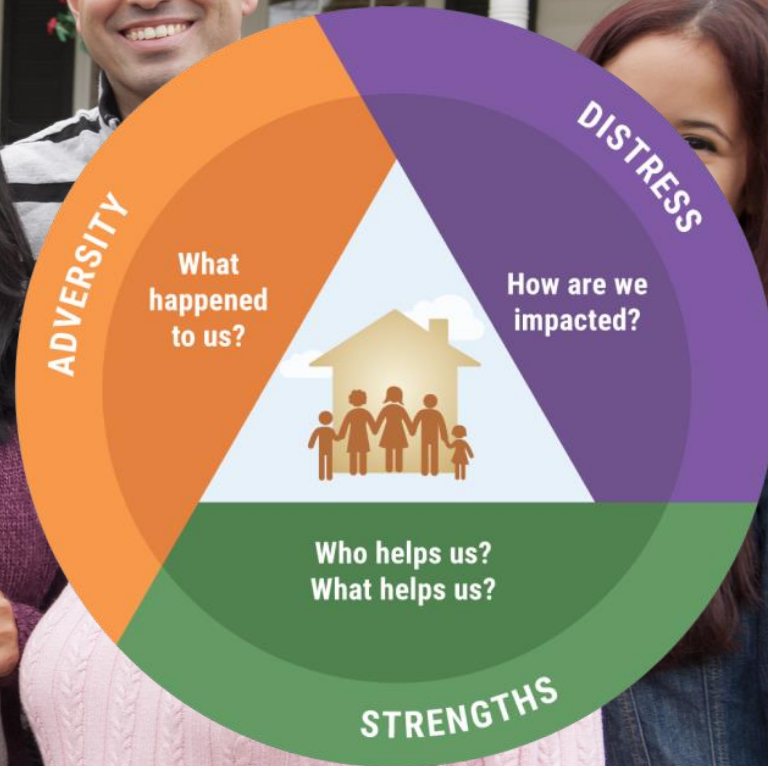
Community Partners (N=20)

- Frontline staff
- Leadership



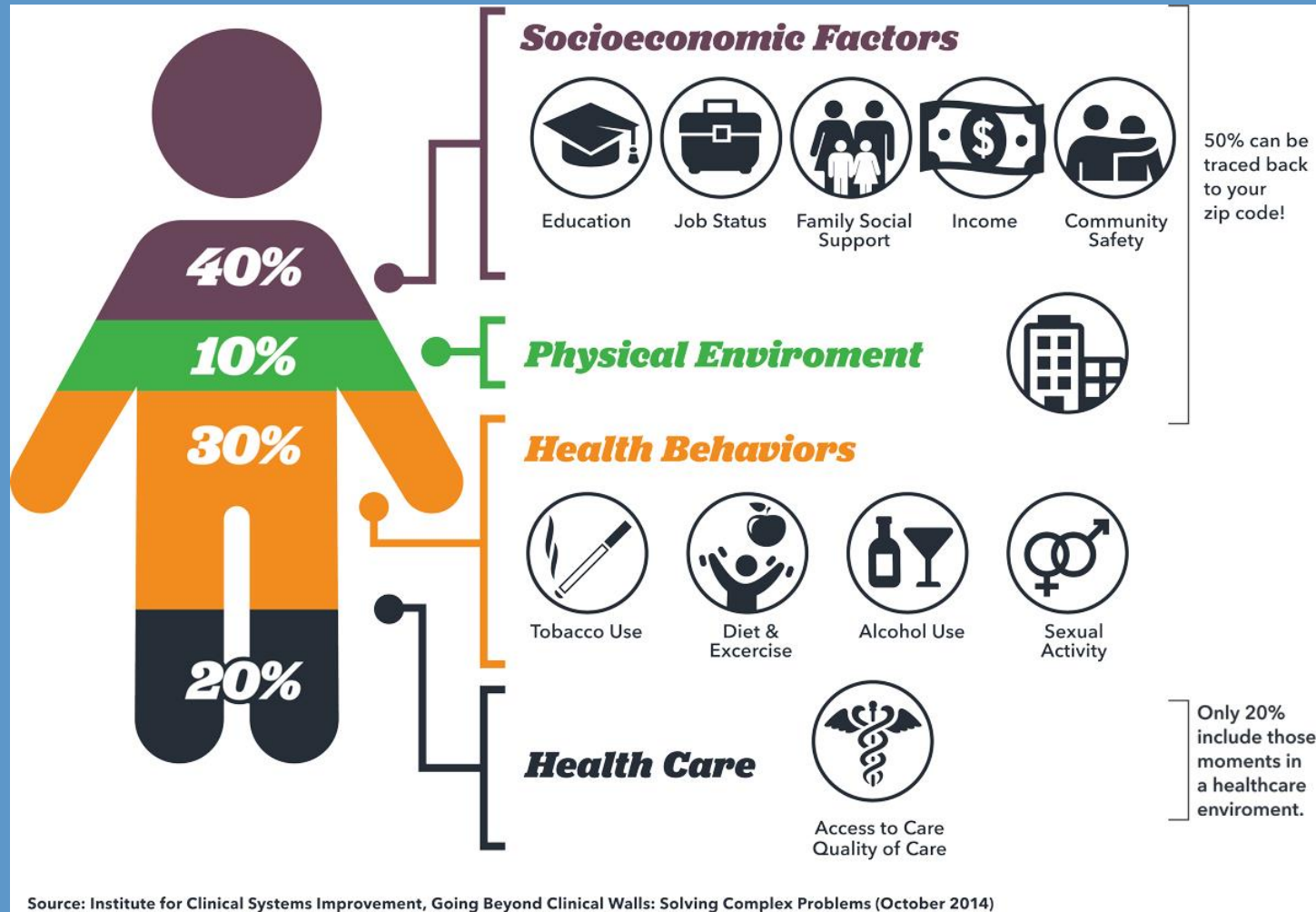
Clinics (N=50)

- Frontline staff
- Behavioral health
- Medical providers



SCHOOL OF
PUBLIC HEALTH

What about HIV?



50% can be traced back to your zip code!

Only 20% include those moments in a healthcare environment



SCHOOL OF
PUBLIC HEALTH

Can we change conditions,
not just individuals?

Yes!

We just have to face it.



SCHOOL OF
PUBLIC HEALTH

Social Determinants of Health

Economic Stability	Neighborhood and Physical Environment	Education	Food	Community and Social Context	Health Care System
Employment	Housing	Literacy	Hunger	Social integration	Health coverage
Income	Transportation	Language	Access to healthy options	Support systems	Provider availability
Expenses	Safety	Early childhood education		Community engagement	Provider linguistic and cultural competency
Debt	Parks	Vocational training		Discrimination	Quality of care
Medical bills	Playgrounds	Higher education		Stress	
Support	Walkability				
	Zip code / geography				

Health Outcomes

Mortality, Morbidity, Life Expectancy, Health Care Expenditures, Health Status, Functional Limitations