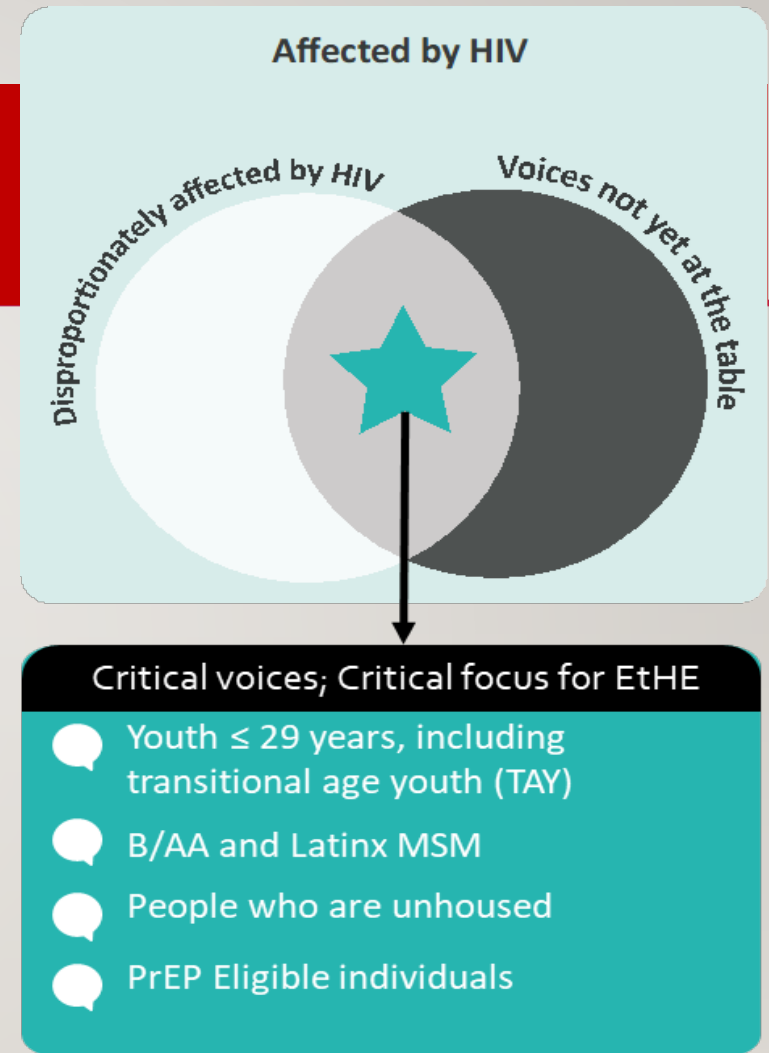


# SACRAMENTO

ENDING THE HIV EPIDEMIC IN AMERICA PS20-2010 ACTIVITIES

EtHE Coordinator: Michelle Gossett [gossettm@saccounty.net](mailto:gossettm@saccounty.net)

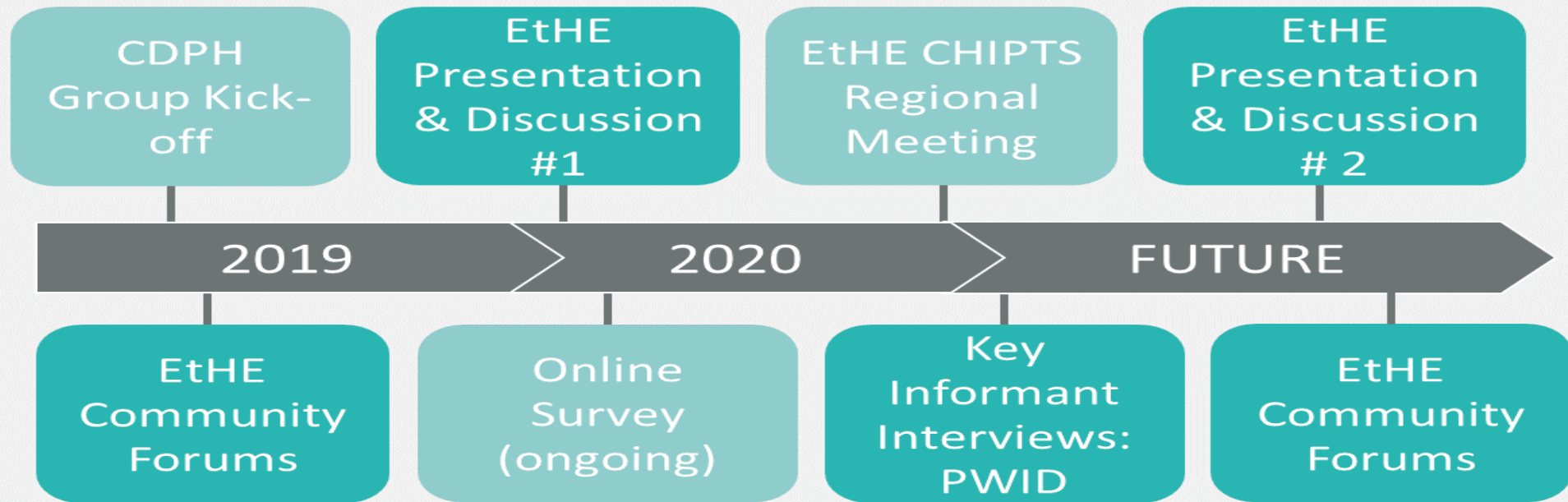
# PRIORITY POPULATIONS



# CDC PS20-2020 EtHE ACTIVITIES

- **Planning & Start-up of the Wellness Without Walls Mobile Clinic (W3)**
  - **Reaching and serving homeless with HIV and general health care**
  - **Expanding health services to PWID in the community**
- **Integration of the Wellness Without Walls Mobile Clinic (W3) with care services**
  - **Enhanced Sexual Health Services**
  - **Youth friendly clinic**

# ENDING THE HIV EPIDEMIC ACTIVITIES



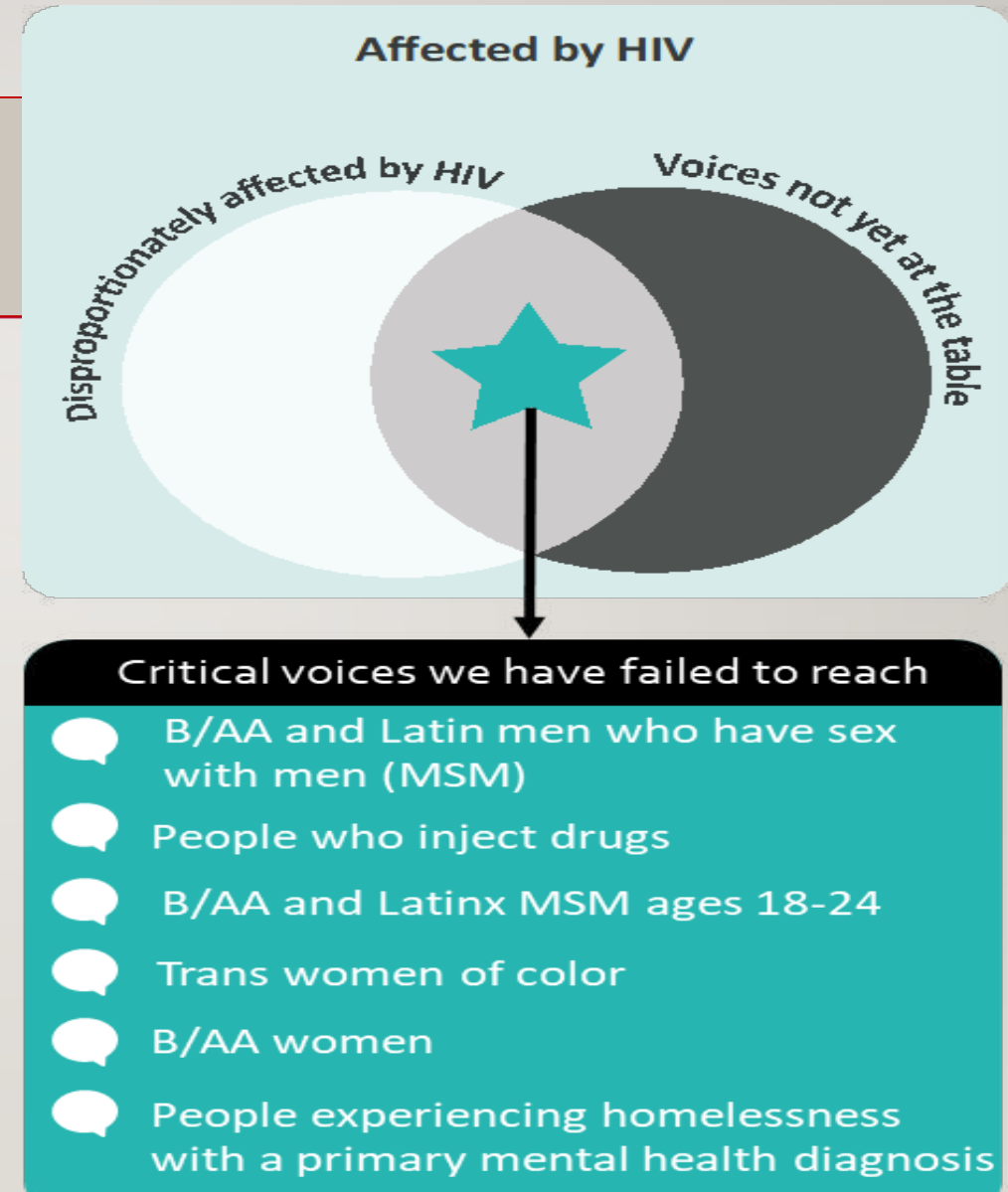
# SAN BERNARDINO

ENDING THE HIV EPIDEMIC IN AMERICA PS20-2010 ACTIVITIES

EtHE Coordinator: Heather Cockerill [Hcockerill@dph.sbcounty.gov](mailto:Hcockerill@dph.sbcounty.gov)



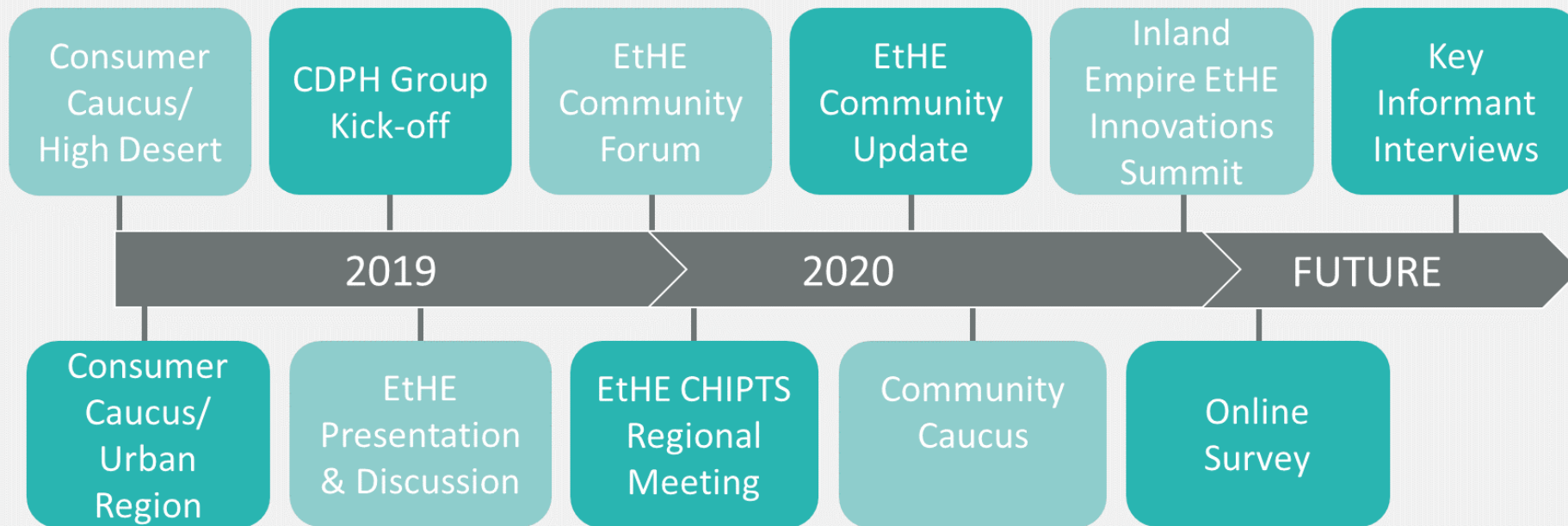
# PRIORITY POPULATIONS



# CDC PS20-2020 EtHE ACTIVITIES

- **Rapid Response Team (RRT)**
- **Mobile Clinic**
- **Expand HIV Prevention Services to People Who Inject Drugs (PWID)**

# ENDING THE HIV EPIDEMIC ACTIVITIES



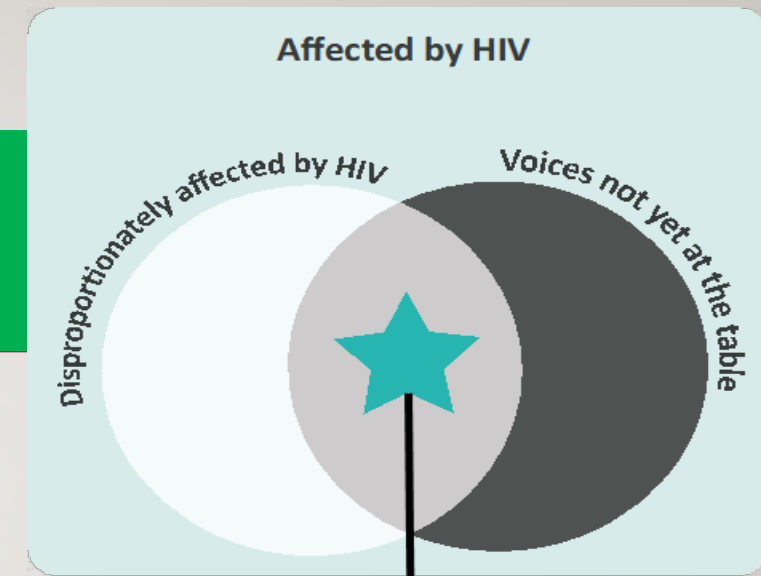


# SAN DIEGO

ENDING THE HIV EPIDEMIC IN AMERICA PS20-2010 ACTIVITIES

EtHE Coordinator: Lauren Brookshire [lauren.brookshire@sdcounty.ca.gov](mailto:lauren.brookshire@sdcounty.ca.gov)

# PRIORITY POPULATIONS



## Critical voices ; Critical focus for EtHE

- Black/African American men who have sex with men
- Latinx men who have sex with men
- Trans persons
- People who inject drugs
- Young people in their 20s and 30s
- Central Region residents

# CDC PS20-2020 EtHE ACTIVITIES

- **Routine HIV Testing Implementation Grants**
- **Benefits Navigation**
- **Enhanced Support for HIV Planning Group/Ending the HIV Epidemic Advisory Committee**
- **Evaluation**
- **Wrap-Around Services for People Who Inject Drugs**
- **Peer-based Mobile PrEP**
- **Getting to Zero App and Resource Guide**
- **Surveillance Program Improvements**

# ENDING THE HIV EPIDEMIC ACTIVITIES







GETTING TO  
**ZERO**  
SAN FRANCISCO

13

# SAN FRANCISCO ENDING THE HIV/HCV/STI EPIDEMICS PLAN

September 30, 2020

Presented by: Hanna Hjord and Bill Blum

San Francisco Department of Public Health

San Francisco EMA  
HIV COMMUNITY PLANNING COUNCIL

Serving Marin, San Francisco and San Mateo Counties



POPULATION HEALTH DIVISION  
SAN FRANCISCO DEPARTMENT OF PUBLIC HEALTH





# Goals: reduce new HIV infections by 90% by 2030, eliminate hepatitis C (HCV), and turn the curve on sexually transmitted infections (STIs)

## Five Guiding Principles:

**Advance health equity and racial justice**

**Integrate HIV, HCV, and STI prevention, care and harm reduction**

**Eliminate HIV/HCV/STI-related stigma and discrimination**

**Ensure that services are as low barrier as possible**

**Value lived experience and fund peer-delivered services**



# Current activities: PS I 9- I 906 planning

- Finalizing SF EtE Plan, a collaborative effort:
  - HIV Community Planning Council
  - SF Getting to Zero Consortium
  - End Hep C SF
  - Several health department sections and community programs
- Expanded community engagement (EtE grantees):
  - Black/African Americans: AIDS Project of the East Bay
  - Latinos/Latinas/Latinx: Cause Data Collective
  - Trans Women: San Francisco Community Health Center (SFCHC)
  - People Who Use Drugs (San Francisco Drug Uses Union (SFDUU))
  - People Experiencing Homelessness (PEH): SFCHC and SFDUU



# Planned activities:



## Diagnose

- Hospital-based clinical champions and public health detailing staff (testing & PrEP)
- Integrated Mobile Health Access Points (MHAPS)
- “Take Me Home” HIV/STI Testing program
- Expanded texting, web-based, and tele-health services



## Treat

- Expanded services for PEH: Street Medicine Services and POP-UP, a new drop in HIV clinic for people who are unhoused
- Jail Health: Expanded post-incarceration linkage services
- Gender Health: peer emotional support and navigation services for people seeking gender-affirming surgery
- HIV/HCV/STI stabilization rooms with support team



# Planned activities cont.



## Prevent

- Youth Sexual Health Ambassador and Youth Advisory Council
- Incentivized, mobile PrEP
- Expand PrEP program at SF City Clinic (municipal STD Clinic – Comp C)
- Mobile contingency management
- Expand harm reduction services at housing sites



## Respond:

- Ending the Epidemics disease control investigator and epidemiologist
- Add language regarding cluster response to new contracts
- Identify flexible funding mechanisms to respond to an HIV outbreak
- Develop a data system to rapidly analyze, integrate, and visualize cluster data

# Expanded Community Engagement:

## **EtE Steering Committee, HIV Community Planning Council, GTZ, EHCSF**

### **Ongoing community engagement partners during 5-10 year implementation period:**

- SFCHC: Leading from Within for Trans women and PEH
- APEB: The Messenger Matters for Black/African-American communities
- Cause Data Collective: Community-based participatory action research for Latino/a/x communities
- SFDUU: Community Advisory Team for people who use drugs

### **SFDPH Community Health Leadership Institute (CHLI)**

- Develop the next generation of leaders for HIC/HCV/STI efforts in San Francisco
- In partnership with the Community Engagement grantees
- Vision: Transformative change to address persistent health disparities in San Francisco





# Thank you!

## San Francisco Ending the Epidemics Steering Committee

**Tomás Aragón**, Director of PHD, Health Officer, EtE Principal Investigator

**Tracey Packer**, Director, Community Health Equity & Promotion (CHEP), SF Getting to Zero Consortium (GTZ), EtE Project Director

**Bill Blum**, Director of Programs, Primary Care Director, HIV Health Services, EtE Project Co-Director

**Susan Buchbinder**, Director, Bridge HIV, GTZ, EtE Project Co-Director

**Susan Phillip**, Director, Disease Prevention & Control (DPC), EtE Project Co-Director

**Ling Hsu**, Applied Research, Community Health Epi & Surveillance (ARCHES), EtE Project Co-Director

**David Gonzalez**, HIV Community Planning Council Community (HCPC) Community Co-Chair

**Irma Parada**, HCPC Community Co-Chair

**Mike Shriver**, HCPC Community Co-Chair

**Dean Goodwin**, Assistant Director, HIV Health Services

**Thomas Knoble**, CHEP Community Based Testing Coordinator/Trainer, HCPC Government Co-Chair

**Ayanna Bennett**, Director of Interdivisional Initiatives, Black/African American Health Initiative

**Katie Burk**, Viral Hepatitis Coordinator, CHEP, End Hep C SF

**Stephanie Cohen**, Medical Director City Clinic

**Jonathan Fuchs**, Director of Center for Learning and Innovation

**Hanna Hjord**, HIV/HCV/STI Behavioral Health Coordinator, CHEP, EtE Project Manager

**Albert Liu**, Clinical Research Director, Bridge HIV

**Eileen Loughran**, Health Program Coordinator, CHEP

**Jacque McCright**, Deputy Director of CHEP, Sexual Health Community Services, Youth United Through Health Education

**John Melichar**, HIV Prevention, Contracts, 18-1802 Program Manager, CHEP

**Jenna Rapues**, Director, Gender Health

**Hyman Scott**, SFDPH Bridge HIV, UCSF, GTZ, HIV Service Provider

**Nikole Trainor**, Getting to Zero Programs Coordinator, CHEP

**For more information, please contact: Hanna Hjord, 628-217-6316, [hanna.hjord@sfdph.org](mailto:hanna.hjord@sfdph.org)**



# Ending the HIV Epidemic (EHE) in Los Angeles County

EHE Regional Learning Collaborative  
September 30, 2020

Julie Tolentino, MPH  
Program Manager, Ending the HIV Epidemic  
Division of HIV and STD Programs



## Current EHE Activities

- Created an EHE Steering Committee
- Seeking partnerships
- Exploring staffing capacity, consumer & provider needs in the COVID-19 era
- Released proposed EHE Plan for public comment
- Developing a community mobilization program
- Weekly meetings with leadership team at DHSP
- EHE Virtual Townhall, increasing knowledge & awareness of EHE across the County



### Diagnose

- Partnered with BHOC
- Distributing home HIV tests to partners
- Telehealth



### Treat

- Developing Emergency Financial Assistance Program
- Housing services
- Mental health partnerships
- Developing protocols for Rapid ART and LTC



### Prevent

- Identifying ways to support TelePrEP
- Exploring partnerships for Syringe Services Programs



### Respond

- Discussing next steps in building surveillance infrastructure

## Planned EHE Activities

Priority populations: Black/African American MSM, Latinx MSM, women of color, PWID, transgender people, youth age 29 or younger



### Diagnose



- Increase routine opt out HIV testing in healthcare & institutional settings
- Increase HIV testing programs in non-healthcare settings including home testing
- Increase client's yearly HIV re-screening of persons with elevated HIV risk

### Prevent

- Utilize data to better identify persons with indication for PrEP and link to services
- Expand PrEP service delivery & provider options, including telehealth and pharmacies
- Improve PrEP retention in care through provider and consumer programming
- Expand Syringe Services Programs

### Treat



- Expand partner services to facilitate rapid ART and linkage to care
- Increase knowledge of and access to HIV services
- Assess mental health services to identify gaps in care
- Improve client experience by working with clinical staff
- Increase opportunities for telehealth
- Develop programming that provides services related to housing and emergency financial assistance

### Respond

- Facilitate real-time cluster detection and response through protocol development and trainings
- Implement routine epidemiological analysis of new infections in hot spots and subpopulations
- Monitor and assess clusters identified through recency testing
- Continue to build surveillance infrastructure at the public health department

## Get involved!

- **Submit feedback on proposed EHE Plan for LA County by October 16, 2020**  
<https://www.lacounty.hiv/>
- Attend Los Angeles County Commission on HIV virtual meetings and/or apply to be a Commissioner  
<http://hiv.lacounty.gov/>
- Visit and share [www.GetProtectedLA.com](http://www.GetProtectedLA.com)
- If your organization, clinic, or community is willing to implement proposed EHE activities, please contact [EHEInitiative@ph.lacounty.gov](mailto:EHEInitiative@ph.lacounty.gov)

Welcome to LACounty.HIV

The Department of Public Health, Division of HIV and STD Programs is excited to align the LA County HIV/AIDS Strategy with the five-year federal initiative, **Ending the HIV Epidemic**.

Stay tuned for website updates on local efforts and how you can take action as a changemaker in your community. Whether you are a community stakeholder, work in government, or are a healthcare professional, you have a role to play in bringing an end to the HIV/AIDS epidemic, ~~once and for all.~~

**Start taking action now by providing your feedback!** Please review our draft, **Ending the HIV Epidemic Plan**, and **submit comments** by October 16, 2020.



# Questions?

Use the



to submit

