

NIH Public Access Policy

BETHANY MYERS

RESEARCH INFORMATIONIST, BIOMEDICAL LIBRARY

BETHANYMYERS@LIBRARY.UCLA.EDU

X42030

What is the NIH Public Access Policy?

The NIH Public Access Policy ensures the public has access to the published results of NIH funded research to help advance science and human health. The Policy has three aims:

- **ARCHIVE.** A central collection of NIH-funded research publications preserves vital published research findings for years to come.
- **ADVANCE.** The archive is an information resource for scientists to research publications and for NIH to manage better its entire research investment.
- **ACCESS.** The archive makes available to the public research publications resulting from NIH-funded research.

What is the NIH Public Access Policy?

Requires scientists to submit final peer-reviewed journal manuscripts that arise from NIH funds to PubMed Central (PMC)

Maximum 12-month embargo

Enforcement:

- Anyone submitting an application, proposal or report to the NIH must include the PMC reference number (**PMCID**) when citing applicable papers that they author or that arise from their NIH-funded research.
- NIH will delay processing of non-competing continuation grant awards if publications arising from that award are not in compliance with the NIH public access policy. **The award will not be processed until recipients have demonstrated compliance.**

What is PubMed Central?

<http://www.ncbi.nlm.nih.gov/pmc/>

Full text repository of 3.9 million articles

Not the same as PubMed

PMIDs are not the same as PMCIDs

Abstract

Send to

Am J Mens Health. 2012 May;6(3):194-210. doi: 10.1177/1557988311424072. Epub 2011 Nov 21.

Depression over the adult life course for African American men: toward a framework for research and practice.

Watkins DC¹.

Author information

Abstract

Rarely are within-group differences among African American men explored in the context of mental health and well-being. Though current conceptual and empirical studies on depression among African American men exists, these studies do not offer a framework that considers how this disorder manifests over the adult life course for African American men. The purpose of this article is to examine the use of an adult life course perspective in understanding the complexity of depression for African American men. The proposed framework underscores six social determinants of depression (socioeconomic status, stressors, racial and masculine identity, kinship and social support, self-esteem and mastery, and access to quality health care) to initiate dialogue about the risk and protective factors that initiate, prolong, and exacerbate depression for African American men. The framework presented here is meant to stimulate discussion about the social determinants that influence depression for African American men to and through adulthood. Implications for the utility and applicability of the framework for researchers and health professionals who work with African American men are discussed.

PMID: 22105067 [PubMed - indexed for MEDLINE] PMCID: PMC3951891 **Free PMC Article**

Images from this publication. See all images (1) Free text



MeSH Terms. Grant Support

MeSH Terms

Adult

African Americans/psychology*

Aged

Aging/psychology

Full text links

View Full-Text Article

PMC Full text

Save items

Add to Favorites

Similar articles

Depression, stressful life events, social : [Arch Psychiatr Nurs. 1997]

Taking it like a man: masculine role norms & [Am J Public Health. 2012]

Recommendations for the use of online social s [Psychol Serv. 2013]

Review Depression in African Amer [Am J Orthopsychiatry. 2013]

Review Prostate cancer disparity: [J S C Med Assoc. 2006]

See reviews...

See all...

Cited by 9 PubMed Central articles

Perceived Control Predicts Pulse Pressure in Africa [Ethn Dis. 2015]

Advancing Racial/Ethnic Minority Men's Health Usin [Ethn Dis. 2015]

Racial/Ethnic Disparities in Men's He: [Fam Community Health. 2015]

Journal List > HHS Author Manuscripts > PMC3951891

HHS Public Access
 Author manuscript
 Peer-reviewed and accepted for publication
 About author manuscripts Submit a manuscript

Am J Mens Health. Author manuscript; available in PMC 2014 Mar 13. PMID: PMC3951891
 NIHMSID: NIHMS558029
 Published in final edited form as:
[Am J Mens Health. 2012 May; 6\(3\): 194-210.](#)
 Published online 2011 Nov 21.
 doi: [10.1177/1557988311424072](#)

Depression Over the Adult Life Course for African American Men: Toward a Framework for Research and Practice

[Daphne C. Watkins, PhD¹](#)

[Author information](#) ► [Copyright and License information](#) ►

The publisher's final edited version of this article is available at [Am J Mens Health](#)
 See other articles in PMC that [cite](#) the published article.

Abstract

Go to:

Rarely are within-group differences among African American men explored in the context of mental health and well-being. Though current conceptual and empirical studies on depression among African American men exists, these studies do not offer a framework that considers how this disorder manifests over the adult life course for African American men. The purpose of this article is to examine the use of an adult life course perspective in understanding the complexity of depression for African American men. The proposed framework underscores six social determinants of depression (socioeconomic status, stressors, racial and masculine identity, kinship and social support, self-esteem and mastery, and access to quality health care) to

PubReader format:
 click here to try

Formats:

Article | [PubReader](#) | [ePub \(beta\)](#) | [PDF \(273K\)](#) | [Citation](#)

Share

Facebook Twitter Google+

Save items

Add to Favorites

Similar articles in PubMed

Depression, stressful life events, social support, and self-[Arch Psychiatr Nurs. 1997](#)

Taking it like a man: masculine role norms as moderators of the [Am J Public Health. 2012](#)

Recommendations for the use of online social support for African Amer [Psychol Serv. 2013](#)

Depression in African American men: a review of what w [Am J Orthopsychiatry. 2013](#)

Prostate cancer disparities in South Carolina: early detection, spec [J S C Med Assoc. 2006](#)

[See reviews...](#)

[See all...](#)

Cited by other articles in PMC

Advancing Racial/Ethnic Minority Men's Health Using a Life Course Approach

Perceived Control Predicts Pulse Pressure in African American Men: The Baltimore Study

Author Manuscript

Author Manuscript

How do I get my paper in PMC?

There are 4 ways that a paper can be added to PubMed Central and become compliant.

- Helpfully called Methods A, B, C, and D

Methods A and B – publisher does all the work

Methods C and D – author does most/all of the work

- Methods C and D involve the use of a system called NIHMS: the NIH Manuscript Submission System

Method A: Open access journals who have a deal with PMC

Method A journals take care of the compliance process for their authors

The whole journal is open access and they put all their articles in PMC automatically

It is a limited [list of journals](#)

Method B: Open access articles

Method B publishers take care of the compliance process for their authors, **IF the authors opted in** at the time of publication, usually paying an open access fee

Sometimes the whole journal may be open access, sometimes only certain articles may be open access

It is a limited list of journals/publishers that participate

Method C: Author does it all

If you did not pay an open access fee/article processing charge to publish your article, chances are this is you

Gather some things:

- Your [eRA Commons](#) username and password (they make you change passwords often so you may have to reset) OR your [NCBI](#) username and password
- The **final author version of your manuscript**
 - NOT the published PDF
 - This is probably your last Word file before you sent it off to journal for the final time
- Don't forget any supplemental files/tables/figures/etc.

Go to the NIH Manuscript Submission System

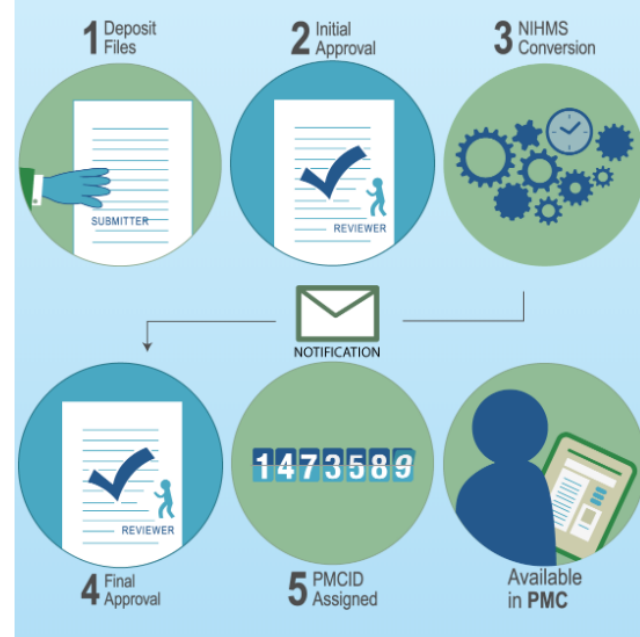
- <https://www.nihms.nih.gov>

Help us improve our system!

Sign In

- NIH Researchers: NIH login, PRA commons
- ACL Researchers: HHS, NCBI
- AHRQ Researchers: HHS, PRA commons
- ASPR Researchers: HHS
- CDC Researchers: HHS, PRA commons
- EPA Researchers: EPA, NCBI
- FDA Researchers: HHS, PRA commons
- HHMI Researchers: hhmi
- NASA Researchers: NASA login, NASA ORCID
- NIST Researchers: NIST

NIHMS Process



Help us improve our system!

Sign In

NIH Researchers



ACL Researchers



AHRQ Researchers



ASPR Researchers



CDC Researchers



EPA Researchers



FDA Researchers



HHMI Researchers



NASA Researchers

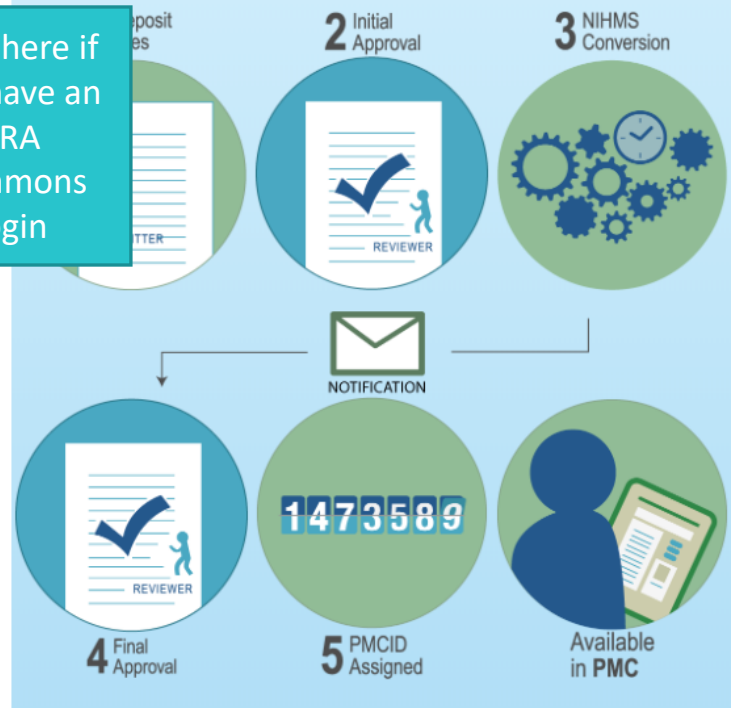


NIST Researchers



Click here if you have an eRA Commons login

NIHMS Process



ASPR Researchers



CDC Researchers



EPA Researchers



FDA Researchers



HHMI Researchers



NASA Researchers



NIST Researchers



VA Researchers



DHS Points of Contact



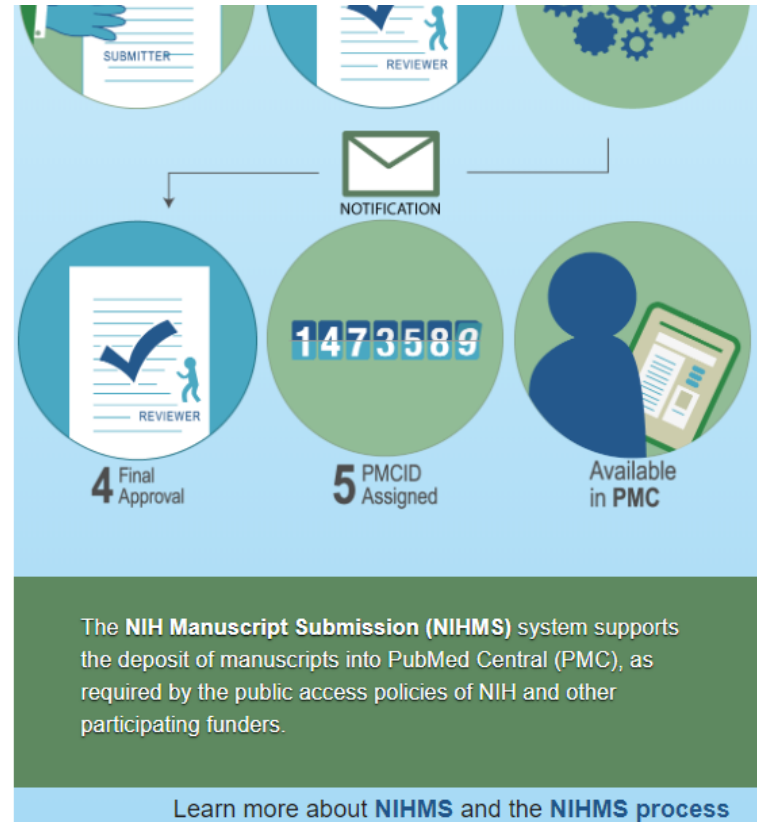
Publishers and Others



[Sign-In Help](#)

Forgot your sign-in route? Request E-mail

Scroll down and click here if you don't have an eRA Commons login



I'm logged into NIHMS, now what?

Follow the steps the upload your manuscript file

- There are [helpful tutorials](#) on the site
- Or call/email me if you need help
 - bethanymyers@library.ucla.edu
 - x42030

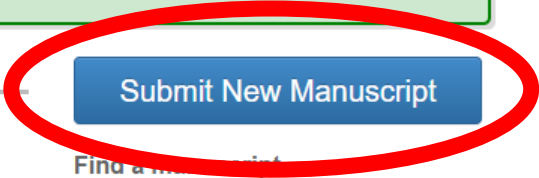
Uploading to NIHMS

Help us improve our system!

Manuscript List for **Bethany Myers**

Needs Your Attention **0** In Process in NIHMS **0** Stalled **0** Completed **0** Available in PMC **0**

No manuscripts that need action by you



[Submit New Manuscript](#)

Find a manuscript

NIHMSID

Uploading to NIHMS

Help us improve our system!

New manuscript submission

- 1. Title Information
- 2. Add Funding
- 3. Upload Files
- 4. Check Files
- 5. Set Reviewer & Embargo

Provide citation information using one of the options below.

Option 1. Enter the manuscript and journal titles

Manuscript Title *

Journal Title *

Option 1. Enter the manuscript and journal titles

Option 2. Search for citation in PubMed

Option 3. Find citation in My NCBI Bibliography

Option 2. Search for citation in PubMed

Option 3. Find citation in My NCBI Bibliography

Cancel Submission

Add Funding ▶

Uploading to NIHMS

Option 2. Search for citation in PubMed

Last 5 searches: 27613635, 25061767, 25502142

Quick search for: Myers, Myers B

Publications	Status
<input type="radio"/> Efficacy and safety of endoscopic third ventriculostomy and choroid plexus cauterization f ... -analysis. J Childs Nerv Syst 11/01/2016	

Uploading to NIHMS

Enter project support information

Search by:

First Name

Last Name

AND/OR

Grant/Project ID

Search

Search Results:

Grantee/PI	Select	Grant/Project ID	Title
------------	--------	------------------	-------

Cancel Submission

◀ Title Information

Upload Files ▶

Uploading to NIHMS

Please upload all files associated with your manuscript, including supplemental files, and move to the next step.


Type	Label	File	Size	Date	Remove
Manuscript *		<input type="button" value="Choose File"/> No file chosen			<input type="button" value="X"/>
Figure	<input type="text"/>	<input type="button" value="Choose File"/> No file chosen			<input type="button" value="X"/>
Table	<input type="text"/>	<input type="button" value="Choose File"/> No file chosen			<input type="button" value="X"/>
Supplemental	<input type="text"/>	<input type="button" value="Choose File"/> No file chosen			<input type="button" value="X"/>

Add another [Manuscript](#), [Figure](#), [Table](#), [Supplemental](#)

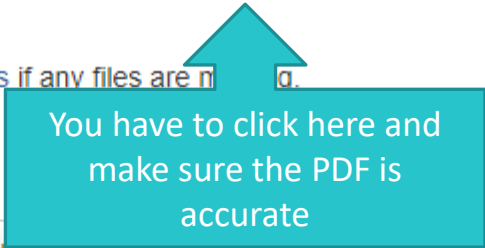
Uploading to NIHMS

Please open and review the PDF Receipt to confirm that you have provided all the materials that make up your manuscript and that are referenced in the text, including any placeholders for supplemental files (if applicable).

You must review the PDF receipt file to advance to the next step.

 PDF Receipt [2019-05-21 19:28:19, 100.4 KB]

Please return to Upload Files if any files are n a.



You have to click here and make sure the PDF is accurate

Save & Exit

Cancel Submission

◀ Upload Files

Set Reviewer & Embargo ▶

Uploading to NIHMS

Set Reviewer

Select	Reviewer			
<input checked="" type="radio"/>	Me (Bethany Myers)			
<input type="radio"/>	<table border="1"><tr><td>First Name</td><td>Last Name</td><td>E-mail</td></tr></table>	First Name	Last Name	E-mail
First Name	Last Name	E-mail		

Set Embargo

Release in PMC after publication in the journal.


Save

Check your journal's policy



◀ Check Files

Approve ▶



I submitted my manuscript, now what

It will take NCBI a period of time to work on your manuscript and convert it to PMC format

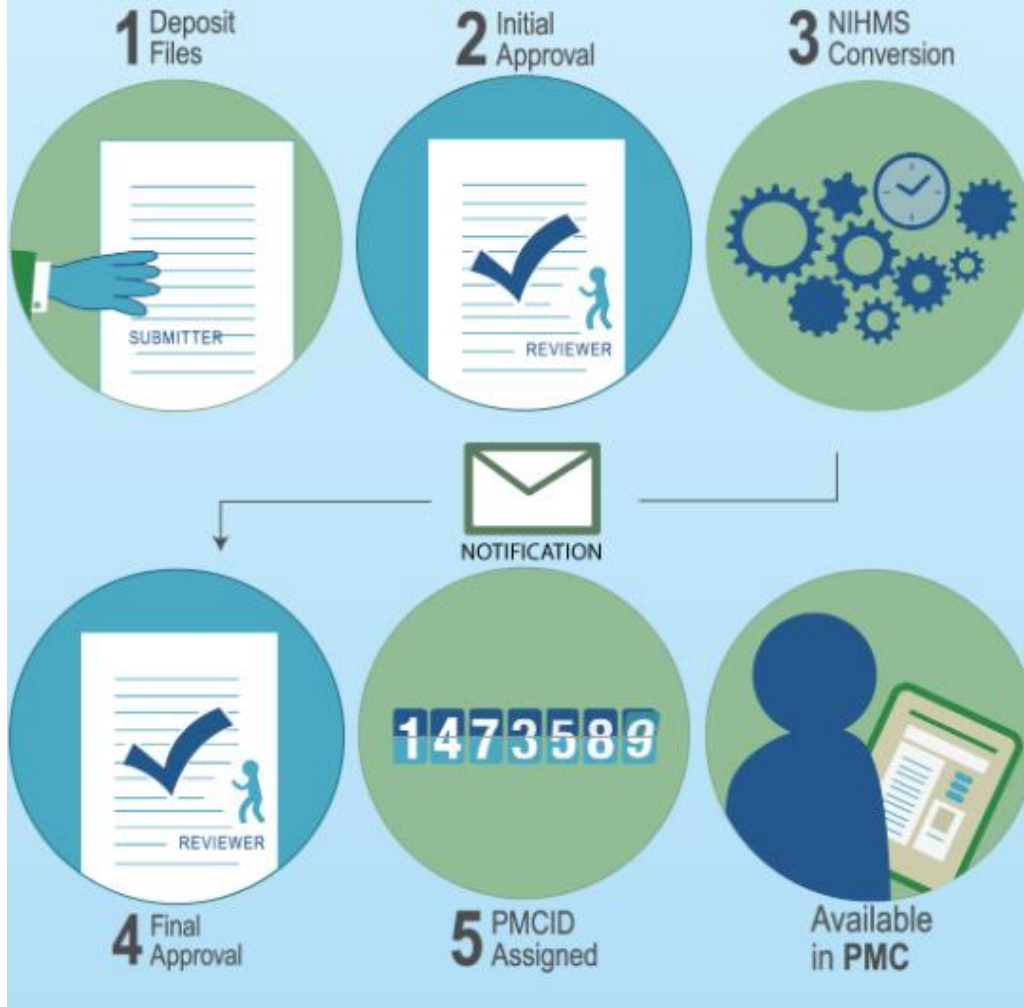
During this period of time, your submitted manuscript has an interim ID number: the NIHMSID

Then you will get an email notifying you that they need your final approval

- Click the link in the email
- If you lose the email, just log back into NIHMS and you'll see the manuscript that needs your attention on your dashboard
- Double check the converted manuscript to make sure it's correct

You only get a PMCID after you do final approval

NIHMS Process



What could go wrong?

You may get other messages from NCBI

- If you are missing tables/figures, etc

If so, log into NIHMS to make any corrections or updates

Method D: Opt-in for file submission only

Some publishers let you skip the first step of uploading your final author manuscript into NIHMS

This is usually an option at the time you're submitting your manuscript

You still have to log into NIHMS to approve the files that the publisher uploads

<p>Funding Body Archiving Mandates *</p> <p>?</p>	<p>Nature Publishing Group encourages the authors of all original research papers to self-archive the final author version (the author's accepted version of their manuscript) with a release date of 6 months post-publication. This is compliant with all major funders' access policies and mandates. With your authorization, NPG can deposit manuscripts in PubMed Central, Europe PubMed Central and PubMed Central Canada on your behalf. We encourage you to take advantage of this service if you or any of your co-authors are funded by an agency requiring self-archiving. Please select from the following options:</p> <p><input type="radio"/> If this manuscript is accepted for publication, please archive it on behalf of the authors. By choosing this option, I authorise NPG to transmit information to the archive I specify.</p> <p><input checked="" type="radio"/> I do not wish NPG to archive this manuscript if accepted, or this service is not applicable to me and my co-authors. If my or my co-authors' funder mandates self-archiving, I understand that it is my responsibility to archive in accordance with its policies.</p> <p>If you have already uploaded your funding information for this manuscript and wish to make any change, please click here.</p>
--	---

How do I know if I have noncompliant articles?

Go to [MyNCBI](#) and click on My Bibliography

The screenshot shows the MyNCBI interface for a user named Bethany Myers. At the top, there is a navigation bar with the NIH logo and the text "U.S. National Library of Medicine National Center for Biotechnology Information". The user's name "bethanyamyers" is displayed in the top right. Below this, the page title is "My Bibliography" followed by "Bethany Myers's Bibliography" and a count of "2" articles. A dropdown menu shows "2 Bibliographies".

On the left, there are links for "MyNCBI" and "ERA linked account". A share URL is provided: <https://www.ncbi.nlm.nih.gov/myncbi/1b0q-lmNy58Av/bibliography/public/>, with a link to "Make bibliography private".


At the bottom left, there are controls for "Manage citations", "Add citations", and "Filter citations". A search bar with "Search citations" and a "Search" button is located at the bottom right. The page is identified as "Page 1 of 1".

The main content area shows a list of citations. The first citation is by Kitayama K, Segura ER, Lake JE, Perez-Brumer AG, Oldenburg CE, Myers BA, Pourjavaheri P, Okorie CN, Cabello RL, Clark JL. The article is titled "Syphilis in the Americas: a protocol for a systematic review of syphilis prevalence and incidence in four high-risk groups, 1980-2016." It was published in Syst Rev. 2017 Oct 10;6(1):195. The citation includes a doi: 10.1186/s13643-017-0595-3, PubMed PMID: 29017552, and PubMed Central PMCID: PMC5634900. To the right of this citation is a green box indicating "Public Access Compliance" is "Complete" with a checkmark icon and the PMCID: PMC5634900. Below this box is a link for "7 Awards".

The second citation is by Weil AG, Westwick H, Wang S, Alotaibi NM, Elkaim L, Ibrahim GM, Wang AC, Ariani RT, Crevier L, Myers B, Fallah A. The article is titled "Efficacy and safety of endoscopic third ventriculostomy and choroid plexus cauterization for infantile hydrocephalus: a systematic review and meta-analysis." It was published in Childs Nerv Syst. 2016 Nov;32(11):2119-2131. The citation includes a doi: 10.1007/s00381-016-3236-6 and Epub 2016 Sep 9. Review. PubMed PMID: 27613635. To the right of this citation is a red box indicating "Public Access Compliance" is "Not defined" with a question mark icon and a link for "[Edit Status]". Below this box is a button for "+ Add Award".

How do I know if I have noncompliant articles?

My Bibliography

Bethany Myers's Bibliography 2  2 

Public Access Compliance

Complete. PMCID: [PMC5634900](#)

[7 Awards](#)


Public Access Compliance

Not defined [[Edit Status](#)]

[+ Add Award](#)


How do I know if I have noncompliant articles?

My Bibliography

Bethany Myers's Bibliography 2  2 

Clicking Edit Status lets you begin the compliance process in NIHMS or mark the record as exempt

[Awards](#)

Public Access Compliance 

Not defined [[Edit Status](#)]

[+ Add Award](#)

Questions?

BETHANY MYERS

RESEARCH INFORMATIONIST, BIOMEDICAL LIBRARY

BETHANYMYERS@LIBRARY.UCLA.EDU

X42030

What is the UC Open Access Policy?

For Academic Senate Faculty:

- Your papers accepted for publication after July 23, 2013 need to be made open access

For everyone else:

- Your papers accepted for publication after October 19, 2015 need to be made open access

You do not have to pay fees to make your papers open access

- (But you can if you want to)

What is eScholarship?

<https://escholarship.org/>

The University of California's open access repository

UCLA



34,552

Items



12,866,921

Views

I got this email-

UCLA

Dear Bethany Myers,

The University of California publication management system has recently located **articles authored by you**:

- **3** articles are covered by the UC Academic Senate faculty Open Access Policy and can be uploaded for public display in eScholarship.
- **7** total articles are awaiting your verification.

Click to verify your articles at:
<http://oapolicy.universityofcalifornia.edu/>

Have questions? Need assistance?

UCLA librarians and staff can help. Email <oa@library.ucla.edu>.

Prefer to appoint someone else to manage your publications?

You can delegate the right to manage your publications to another person. [Learn more.](#)

Want to know more?

Information about the UC Open Access Policy passed by the UC Academic Senate in 2013 is available on the [UCLA Library website](#).

Best regards,

The UCLA Open Access Policy Team
oa@library.ucla.edu

**Grow your readership:
Upload your manuscript
to eScholarship**

After confirming authorship of an article, upload the final version of the manuscript to the UC eScholarship repository. This makes your article open access, which significantly increases its reach and impact and fulfills the terms of the UC Open Access Policy.

[Learn more](#)

**What is the publications
management system?**

This system was commissioned by the UC Academic Senate to help faculty comply with the Senate's Open Access Policy. The UCLA Library is working closely with the Senate to support faculty use of the system.

[Learn more](#)

Claim and share


The screenshot shows a user interface for a UCLA library system. At the top, a dark navigation bar contains a user profile icon, the text "Logged in as Bethany Myers", a "LOG OUT" button, and utility icons for navigation, email, and help. Below this is a blue header with the "UCLA" logo. A secondary navigation bar includes "Home" and "Menu" buttons. The main content area features a "Welcome, Bethany Myers" message, a placeholder profile picture, and user details: "UC Los Angeles (non senate)", "bethanymyers@library.ucla.edu", and "ORCID: 0000-0002-4137-6245". A "Go to your profile" button is located below the profile information. The "My Actions (2)" section is highlighted in grey and contains a notification card. The card displays "There is 1 publication for you to claim or reject" with a red circle containing the number "1". Navigation arrows and a "Claim publications" button are visible within the card. A "1 of 2" indicator is in the top right corner of the card.

Logged in as **Bethany Myers** LOG OUT

UCLA

Home > Menu

Welcome, Bethany Myers

 UC Los Angeles (non senate)
bethanymyers@library.ucla.edu
ORCID: [0000-0002-4137-6245](#)

[Go to your profile](#)

My Actions (2)

1 of 2





There is **1** publication for you to claim or reject

[Claim publications](#)


Claim and share

Mine (4) Pending (1) Not mine (36)



1 result

Select all on page  Export  Claim  Reject  Detailed view

Nanoscale electrical conductivity imaging using a nitrogen-vacancy center in diamond

 Ariyaratne A, Bluvstein D, Myers BA, [Jayich ACB](#)

NATURE COMMUNICATIONS 9:LBL Report Number ARTN 2406 19 Jun 2018 [Author URL](#) [UC-eLinks](#) [doi>](#)

Journal article In Open Access policy  Claim as mine  Reject (Not mine)

1 result

Deposit publication: Defining Skin Ulcers in Systemic Sclerosis: Systematic Literature Review and Proposed World Scleroderma Foundation (WSF) definition.

[< Return to the previous page](#)



Use the tools below to upload a version of your manuscript for public display on eScholarship.

Doing so greatly increases the audience for your publication, and satisfies the terms of the UC Presidential Open Access Policy.

You are about to deposit this journal article to **eScholarship**. [>](#)

Deposit advice

Institutional advice

SHERPA / RoMEO advice

[UC Presidential Open Access Policy Deposit Advice](#)

You can deposit the author's final version of this manuscript for public display on eScholarship if:

- you were a **UC employee when you wrote it**,
- you signed the publication agreement after **October 23, 2015, and**
- your publisher did not contact you to require that you provide proof of waiver or embargo of the policy.

The **author's final version** is the version after peer review but before the publisher formats it in the finalized layout. Read more about the Presidential and other UC Open Access Policies at [uc-oa.info](#).

If the above requirements **do not** describe your situation, please click the Sherpa / RoMEO tab above to view your publisher's standard sharing policies. You may still be able to deposit your article.

1. Prepare deposit (step 1 of 3)

Upload a file

Enter an OA location

Choose a file from your local machine:

Choose file: No file chosen

File version:

[Leave without depositing](#)

Deposit publication: Defining Skin Ulcers in Systemic Sclerosis: Systematic Literature Review and Proposed World Scleroderma Foundation (WSF) definition.

< Return to the previous page



Use the tools below to upload a version of your manuscript for public display on eScholarship.

Doing so greatly increases the audience for your publication, and satisfies the terms of the UC Presidential Open Access Policy.

You are about to deposit the following file:

Deposit advice

Institutional advice

[UC Presidential Open Access Policy](#)

You can deposit the following file for public display on eScholarship if:

- you were a UC employee at the time of publication, and you signed the policy in 2015, and
- your publisher did not require you to provide proof of waiver or embargo of the policy.

The **author's final version** is the version after peer review but before the publisher formats it in the finalized layout. Read more about the Presidential and other UC Open Access Policies at [uc-oa.info](#).

If the above requirements **do not** describe your situation, please click the Sherpa / RoMEO tab above to view your publisher's standard sharing policies. You may still be able to deposit your article.

1. Prepare deposit (step 1 of 3)

Upload a file

Enter an OA location

If your publication is already available elsewhere in Open Access form, please enter the location here:

* OA location:

File version:

Save location

Use this file

[Leave without depositing](#)

What if my publisher doesn't want me to do this?

UC contacted publishers years ago informing them of this policy

Only a few publishers are asking authors for waivers to opt out

- Mostly Nature

If the publisher doesn't explicitly request that you opt out, you retain the right to upload your manuscript to eScholarship

Questions?

BETHANY MYERS

RESEARCH INFORMATIONIST, BIOMEDICAL LIBRARY

BETHANYMYERS@LIBRARY.UCLA.EDU

X42030