

2022 CHIPTS HIV NEXT GENERATION CONFERENCE

DECEMBER 2, 2022

9:00AM-12:15PM PST

VIRTUAL CONFERENCE

Conference Theme:

**"Implementation Science for HIV Prevention
and Treatment to End the Epidemics"**

www.chipts.ucla.edu

WELCOME

Friday, December 2, 2022

Dear Friends and Colleagues,

The UCLA Center for HIV Identification, Prevention, and Treatment Services (CHIPTS) is proud to present the 2022 HIV Next Generation Virtual Conference. We are excited that you are here! Thank you for attending!

The theme of today's conference is "Implementation Science for HIV Prevention and Treatment to End the Epidemics." The conference was designed to provide an opportunity for emerging HIV investigators and community partners to highlight their research, network with other colleagues, and share their visions for future priorities. We hope that the day is valuable, and that the information you learn and the people you meet leave you invigorated and renewed in our shared mission to end the HIV epidemic in Los Angeles and around the world.

We would like to acknowledge the National Institute of Mental Health Grant #MH058107 for providing funding for this conference.

We would also like to give special thanks to our conference collaborator, the Los Angeles Region Pacific AIDS Education and Training Center, for providing CEU credits for this event.

We hope you enjoy the conference and we look forward to meeting you!

Sincerely,
The Conference Planning Committee



PLENARY SPEAKER



AMAYA PEREZ-BRUMER, PHD, MSC

*Assistant Professor
Dalla Lana School of Public Health
University of Toronto*

Dr. Amaya Perez-Brumer is a Latinx critical global health scholar and a Canada Research Chair in Global Health Intervention Justice. She is an Assistant Professor in the Division of Social and Behavioral Health Science. She earned her Ph.D. in Sociomedical Sciences and Sociology from Columbia University and holds an MSc in Social and Behavioral Sciences from the Harvard T.H. Chan School of Public Health. Her scholarship integrates social science theory with innovative mixed methodological approaches to improve HIV prevention intervention implementation and acceptability among people of diverse genders and sexualities globally. She has published two edited books, more than 75 peer-reviewed articles and is currently the Principal Investigator of a Canadian Institutes of Health Research Operating Grant (2022-2026) assessing HIV prevention strategies for Venezuelan migrants who engage in sex work and two Canadian Social Science and Humanities Research Council (SSHRC) awards (Insight Development and Partnership Engage) developing justice-informed global health strategies for transgender women in Peru. She also serves as an Associate Editor for Global Public Health and holds a secondary academic affiliation with the AIDS Clinical Trials Network (ACTG) on A5403 “Giving standardized estradiol therapy in transgender women to research interactions with HIV therapy: the GET IT RIGHT Study”. She is also an early career Bridge Fellow on the HIV Prevention Trials Network (HPTN) protocol 094, “INTEGRA: A Vanguard Study of Integrated Strategies for Linking Persons with Opioid Use Disorder to Care and Prevention for Addiction, HIV, HCV and Primary Care”.

OPENING REMARKS

9:00 AM - 9:05 AM PST



NORWEETA MILBURN, PHD

*Director, CHIPTS Development Core
Research Professor-in-Residence,
Senior Director of Research and Evaluation
Co-Director, DMH + UCLA Prevention Center of Excellence
Co-Director, UCLA HIV/AIDS, Substance Abuse, and Trauma Training
Program (HA-STTP)
Honorary Professor, University of Cape Town, South Africa
UCLA Nathanson Family Resilience Center, Department of Psychiatry and
Biobehavioral Sciences, Division of Population Behavioral Health
Jane and Terry Semel Institute for Neuroscience and Human Behavior at UCLA*



STEVE SHOPTAW, PHD

*Director, CHIPTS
Professor, UCLA Departments of Family Medicine and Psychiatry and
Biobehavioral Science
Vice Chair, Research in Family Medicine*

ANNOUNCEMENTS

9:05 AM - 9:10 AM PST



DALLAS SWENDEMAN, PHD (CONFERENCE MODERATOR)

*Co-Director, CHIPTS Development Core
Associate Professor-in-Residence, Department of Psychiatry and
Biobehavioral Sciences, DGSOM and Department of Epidemiology,
UCLA Fielding School of Public Health
Co-Director, UCLA Center for Community Health, Semel Institute for
Neuroscience and Human Behavior*



AMAYA PEREZ-BRUMER, PHD, MSC

Assistant Professor, Dalla Lana School of Public Health, Division of Social and Behavioural Health Science

Presentation Title: Who Benefits from Global HIV Prevention Science? A Call for Researcher Accountability

Presentation Summary: To imagine and reimagine a more just praxis for HIV research globally, we, as scholars and practitioners, must grapple with the extreme privilege at the center of who gets to do global HIV health research, who are its beneficiaries, and who are its subjects. To begin to think through these provocations, this talk will discuss three ongoing paradoxes rooted in data politics and the extractive logics at the center of global HIV prevention science.

ORAL PRESENTATIONS SET 1

9:45 AM - 10:20 AM PST

Attendees choose between Panel 1 or Panel 2.

PANEL 1: MENTAL HEALTH AND HIV PREVENTION



LAURA BOGART, PHD (DISUSSANT)

*Core Scientist, Combination Prevention Core (CHIPTS)
Senior behavioral scientist at the RAND Corporation*

1. JASMINE LUCERO LOPEZ, BS

Presentation Title: A virtual platform to mitigate the effects of isolation among older people living with HIV: Lessons learned in usability with Discord

2. KATHERINE LEWIS, BA

Presentation Title: "I have moments where I am down, but it has made me resilient": Mental Health Strengths Among Youth At-Risk for and Living with HIV

3. CURTIS WONG, BSC & ALICE MA, BSC

Presentation Title: Sexual Health Promotion Methods and Decision-Making among Youth At-Risk for and Living with HIV in Los Angeles and New Orleans: A Qualitative, Choice-Based Analysis

PANEL 2: HIV PREVENTION



**DILARA K. ÜSKÜP, PHD, PHD
(DISCUSSANT)**

Core Scientist, Policy Impact Core (CHIPTS)

Investigator, UCLA Department of Family Medicine

Assistant Professor, Charles R. Drew University of Medicine and Sciences

1. DAVID MOSQUEDA & DINO SELDERS, B.S

Presentation Title: Addressing PrEP/ PEP use disparities amongst marginalized communities by way of a peer-led collaborative initiative

2. LORI ZOMBACK BS

Presentation Title: Medical Student-Run Telehealth for HIV Testing and Counseling among Sexual Minority Men: Impact on Patient Experience and Implications for Student Education

3. PABLO ZAPATA, PHD

Presentation Title: Factors Associated with HIV Testing among Spanish and English Speaking Latinx Youth

POSTER SESSIONS VIDEO INTRODUCTIONS

10:20 AM - 10:40 AM PST

POSTER SESSIONS - BREAKOUT ROOMS

10:40 AM - 11:00 AM PST

See page 13 for a complete list of posters.

BREAK

11:00 AM - 11:05 AM PST

ORAL PRESENTATIONS SET 2

11:05 AM - 11:30 PM PST

Attendees choose between Panel 1 or 2.

PANEL 1: SUBSTANCE USE AND HIV



**PAMINA M. GORBACH, MHS, DRPH
(DISCUSSANT)**

Global HIV Director, CHIPTS

*Co-director, UCLA Center for AIDS Research Program on
Biobehavioral Epidemiology and Substance Use*

**1. BORAM KIM, PHD, RN & CHENG-SHI SHIU, PHD &
WEI-TI CHEN, RN, CNM, PHD, FAAN,**

Presentation Title: Factors Influencing Betel Nut Chewing Behavior in People Living with HIV in Myanmar

2. AMANDA P. MILLER, PHD, MS

Presentation Title: Substance Use And Associated Intimate Partner Violence Risk Among MSM In Los Angeles, California

PANEL 2: EHE IMPLEMENTATION SCIENCE (PT. 1)



**JESSE CLARK, MD
(DISCUSSANT)**

Core Scientist, Combination Prevention Core (CHIPTS)

*Associate Professor-in-Residence in the Department of Medicine, Division
of Infectious Disease and Department of Family Medicine in the DGSOM*

1. ALISON HAMILTON, PHD, MPH

Presentation Title: The UCLA Rapid, Rigorous, Relevant (3R) Implementation science Hub: Supporting EHE Initiatives

2. WEI-TI CHEN, RN, CNM, PHD, FAAN,

Presentation Title: Addressing intersectional oppression in Asian Pacific Americans with HIV in Southern CA: An Implementation Science Framework

**3. LAURA HOYT D'ANNA, MPA, DRPH & EVERARDO ALVIZO, LCSW &
JAELEN OWENS, BA**

Presentation Title: Implementing a Community-engaged Equity Approach to Identify Barriers and Facilitators to the PrEP Care Continuum in Long Beach, CA

RETURN TO MAIN SESSION

11:30AM - 11:35 AM PST

ORAL PRESENTATIONS SET 3

11:35 AM - 12:10 PM PST

Attendees choose between Panel 1 or 2.

PANEL 1: POLICY IMPACT



AYAKO MIYASHITA OCHOA, JD
(DISCUSSANT)

Core Co-Director, Policy Impact Core (CHIPTS)
Adjunct Faculty, UCLA Luskin School of Public Affairs

1. FELIPE FINDLEY, PA-C, MAPS, AAHIVS & VANESSA WARRI, MSW

Presentation Title: HIV and the Carceral State: Researching Effects on Health Outcomes

PANEL 2: EHE IMPLEMENTATION SCIENCE (PT. 2)



DALLAS SWENDEMAN, PHD, MPH
(DISCUSSANT)

Core Co-Director, Development Core (CHIPTS)
Co-Director, Center of Expertise on Women's Health, Gender, and Empowerment at the University of California Global Health Institute.

1. RONALD A. BROOKS, PHD

Presentation Title: Implementation Strategies to Promote Equitable Dissemination of Long-Acting injectable PrEP to Black/Latino MSM and Transgender Women in Los Angeles.

2. RAIZA M. BELTRAN, PHD, MPH & TAM PHAN, PHARMD, AAHIVP

Presentation Title: Pharmacist delivered PrEP and PEP in three high priority EHE counties in CA (Los Angeles, Riverside and San Bernardino Counties): An overview.

3. **CARL HIGHSHAW, PHD & SUNG-JAE LEE, PHD**

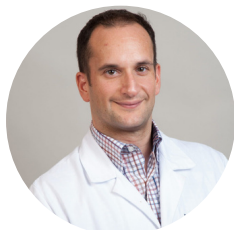
Presentation Title: Haus of C.H.O.P (Choosing Healthy Options for Prevention/PrEP)

4. **CORRINA MOUCHERAUD, SCD, MPH & RAPHAEL LANDOVITZ, MD, MSC**

Presentation Title: The incentives for prevention study (TIPS): Financially incentivizing strategies for HIV prevention in high-incidence populations in LA County

CLOSING REMARKS

12:10 PM - 12:15 PM PST



RAPHAEL J. LANDOVITZ, MD, MSC

Co-Director, CHIPTS

Co-Director, CHIPTS Combination Prevention Core

Professor of Medicine, UCLA Center for Clinical AIDS Research and Education

WILLIAM E. CUNNINGHAM SCHOLAR AWARDEE



TUCKER AVRA, DVM

Medical Student

David Geffen School of Medicine at UCLA

ORAL PRESENTATIONS



ORAL SET 1 - PANEL 1: MENTAL HEALTH AND HIV PREVENTION

1. JASMINE LUCERO LOPEZ, BS

Research Assistant, Department of Psychology, University of California, Riverside

Presentation Title: A virtual platform to mitigate the effects of isolation among older people living with HIV: Lessons learned in usability with Discord

Presentation Summary: This presentation will discuss the perspectives of a Community Advisory Board (CAB) on the usability of Discord as a virtual village. We will explore the benefits and drawbacks of this platform for the purpose of this study, based on the opinions expressed by the CAB. Lessons learned from this experience and how to improve future studies will be shared.

2. KATHERINE LEWIS, BA

Graduate Student Researcher, UCLA Fielding School of Public Health Department of Community Health Sciences & UCLA Center for Community Health

Presentation Title: "I have moments where I am down, but it has made me resilient": Mental Health Strengths Among Youth At-Risk for and Living with HIV

Presentation Summary: Youth enrolled in several linked HIV prevention and treatment continua studies who participated in a telehealth coaching intervention completed a strengths assessment, and qualitative data on mental health strengths was analyzed using thematic analysis and a resilience lens. Youth self-described mental health strengths included intrapersonal resilience assets (protective traits, stress management activities, feeling positive despite current mental health challenges, and no current mental health challenges) and external resilience resources (social/emotional support, therapy/counseling, and use of mental health medication). These results highlight the utility of strengths-based intervention methods and resilience for youth at-risk for and living with HIV.

3. CURTIS WONG, BSC

Research Associate, UCLA CTSI-RAP, Center for Community Health, Department of Psychiatry and Biobehavioral Sciences, DGSOM

ALICE MA, BSC

Research Associate, UCLA CTSI-RAP, Center for Community Health, Department of Psychiatry and Biobehavioral Sciences, DGSOM

Presentation Title: Sexual Health Promotion Methods and Decision-Making among Youth At-Risk for and Living with HIV in Los Angeles and New Orleans: A Qualitative, Choice-Based Analysis

Presentation Summary: A strengths-based telehealth coaching intervention was delivered to youth at-risk for or living with HIV in Los Angeles and New Orleans within the context of several linked HIV prevention and treatment continua studies. We used a choice-based framework and qualitative methods to analyze strengths assessment data, which revealed intrapersonal, interpersonal, and structural factors that influenced participants' sexual health decision-making, including decisions regarding PrEP use, condom use, and other strategies. These results demonstrate the utility of self-determination and choice-based frameworks in sexual health promotion efforts for youth.

ORAL SET 1 - PANEL 2: HIV PREVENTION

1. DAVID MOSQUEDA

PrEP Navigator, Altamed Health Services

DINO SELDERS, B.S

PrEP Navigator, Altamed Health Services

Presentation Title: Addressing PrEP/ PEP use disparities amongst marginalized communities by way of a peer-led collaborative initiative

Presentation Summary: PrEP Furnishing shows promise of assisting marginalized peoples living in primary care healthcare shortage areas. Altamed fast tracks furnishing initiatives by placing PrEP navigators in the lead when it comes to Patient initial care and retention.

2. LORI ZOMBACK, BS

Medical Student, SUNY Downstate College of Medicine

Presentation Title: Medical Student-Run Telehealth for HIV Testing and Counseling among Sexual Minority Men: Impact on Patient Experience and Implications for Student Education

Presentation Summary: A group of medical students conducted tele-health HIV testing using OraQuick and provided education and risk-reduction counseling during the turnaround time. There was high participant satisfaction and educational benefit for the students, demonstrating benefits to both public health and medical education.

3. PABLO ZAPATA, PHD

Post Doctoral Research Fellow, Northwestern University, Feinberg School of Medicine - Institute of Sexual and Gender Minority Health

Presentation Title: Factors Associated with HIV Testing among Spanish and English Speaking Latinx Youth

Presentation Summary: Data for the current project were collected as part of SMART, an ongoing pragmatic trial of an online HIV prevention intervention for adolescent sexual minority youth. Despite higher risk, few Latino youth reported ever having received an HIV test. Results suggest sexual health education and pediatricians are an important, but largely untapped, source of testing and could be further supported with familial support to end the epidemic

ORAL SET 2 - PANEL 1: SUBSTANCE USE AND HIV

1. BORAM KIM, PHD, RN

Postdoctoral Scholar, UCLA School of Nursing

WEI-TI CHEN, PHD

Associate Professor, UCLA School of Nursing

CHENG-SHI SHIU, PHD

Assistant Professor, National Taiwan University Department of Social Work

Presentation Title: Factors Influencing Betel Nut Chewing Behavior in People Living with HIV in Myanmar

Presentation Summary: Despite the WHO classifying betel nuts as a carcinogen with a high risk of oral and laryngeal cancer, Myanmar is one of the world's largest consumers of betel nuts because chewing betel nuts is socially and culturally influenced in Myanmar. The study aimed to examine factors that influence betel nut chewing in people living with HIV (PLWH) in Myanmar. From a secondary analysis of 2020 Myanmar PLWH data, physiological hyperarousal symptoms and loneliness were associated with increased betel nut chewing among PLWH in Myanmar.

2. AMANDA P. MILLER, PHD, MS

Postdoctoral Fellow, San Diego State University-University of California San Diego (Joint T32 program)

Presentation Title: Substance Use And Associated Intimate Partner Violence Risk Among MSM In Los Angeles, California

Presentation Summary: Prior work suggests substance use is a risk factor for intimate partner violence but limited research exploring this association among MSM exists. We explored associations between substance use and experiences of IPV among MSM participating in the mSTUDY cohort in Los Angeles. Stimulant use was associated with increased odds of experiencing IPV relative to those reporting no stimulant use and the magnitude of this association was greater among MSM living with HIV.

ORAL SET 2 - PANEL 2: EHE IMPLEMENTATION SCIENCE (PT. 1)

1. ALISON HAMILTON, PHD, MPH

Professor in Residence, Department of Psychiatry and Biobehavioral sciences, UCLA

Presentation Title: The UCLA Rapid, Rigorous, Relevant (3R) Implementation science Hub: Supporting EHE Initiatives

Presentation Summary: The UCLA 3R Hub, a supplement to CHIPTS, is one of eight hubs funded by the NIMH to support EHE pilot Implementation studies. This presentation will briefly address the critical role of Implementation science in ending the HIV Epidemic and will describe services and supports that are available to the Southern California community and beyond.

2. **WEI-TI CHEN, RN, CNM, PHD, FAAN**

Associate Professor, University of California, Los Angeles School of Nursing

Presentation Title: Addressing intersectional oppression in Asian Pacific Americans with HIV in Southern CA: An Implementation Science Framework

Presentation Summary: The purpose of this study is to collaborate with the local Asian Pacific American With HIV (APAWH) community to adapt and evaluate the appropriateness, acceptability, and feasibility of a 4-session, 4-week Social-justice Oriented, Family Informed self-management intervention to promote health among APAWH in Southern California, particularly Orange counties (SOFIAA). The scientific premise is that APAWH experience systematic barriers in healthcare delivery and policies, resulting in poor health outcomes. Additionally, regardless of ethnicity, APAs often prioritize their responsibilities to their families over their own individual needs. Our hypothesis is that APAWH will perceive SOFIAA as acceptable, feasible, and appropriate and a future study will demonstrate SOFIAA may be used to promote family support, decrease the effects of structural racism and HIV-related stigma, and achieve better outcomes in APAWH. This study addresses the critical need to optimize an intervention to promote self-management skills among APAWH by simultaneously addressing the reality and effects of structural racism and discrimination against APAWH from both the mainstream U.S. society and the APA communities.

3. **LAURA HOYT D'ANNA, MPA, DRPH**

Director, Center for Health Equity Research and Associate Professor, Department of Health Science, California State University, Long Beach

EVERARDO ALVIZO, LCSW

HIV/STD Strategic Implementation Specialist, Long Beach Department of Health and Human Services

JAELEN OWENS, BA

Health Education/Outreach Specialist Coordinator, Center for Health Equity Research

Presentation Title: Implementing a Community-engaged Equity Approach to Identify Barriers and Facilitators to the PrEP Care Continuum in Long Beach, CA

Presentation Summary: The study aims to address the HIV epidemic by improving PrEP linkage, uptake, and retention among Black and Latinx same-gender loving men, transgender women, and other gender-diverse persons in Long Beach, CA. This is a mixed methods study designed to explore barriers and facilitators to engagement along the PrEP care continuum from the viewpoints of community members and current and potential PrEP providers. Findings will inform the following: 1) the Long Beach HIV/STI Strategic Plan, 2) a culturally appropriate PrEP readiness and facilitation tool, and 3) intervention opportunities to be studied in future research.

ORAL SET 3 - PANEL 1: POLICY IMPACT

1. FELIPE FINDLEY, PA-C, MAPS, AAHIVS

Physician Assistant, Watts Healthcare Corporation and Member, CHIPTS Community Advisory Board, Commissioner, LA County HIV Commission

VANESSA WARRI, MSW

PhD Student, UCLA Luskin School of Public Affairs, Department of Social Welfare, Center for the Study of Women

Presentation Title: HIV and the Carceral State: Researching Effects on Health Outcomes

Presentation Summary: This panel will share broad perspectives of CHIPTS Community Advisory Board member and community partners engaged in CHIPTS PIC work to address disproportionate health outcomes across communities engaged by carceral systems. Panelists will elucidate pathways for researchers to better capture the effects of criminalization on health outcomes.

ORAL SET 2 - PANEL 2: EHE IMPLEMENTATION SCIENCE (PT. 2)

1. RONALD A. BROOKS, PHD

Associate Professor, UCLA Department of Family Medicine.

Presentation Title: Implementation Strategies to Promote Equitable Dissemination of Long-Acting injectable PrEP to Black/Latino MSM and Transgender Women in Los Angeles.

Presentation Summary: The project will host 7 informational/educational community workshops to provide up-to-date and relevant information on LAI-PrEP to providers (medical and non-medical) that serve Black/Latino/a MSM and transgender women and potential consumers. Additionally, the project will develop a community-derived and culturally appropriate strategic messaging guide to facilitate ongoing dissemination of LAI PrEP information to our focused populations of providers and consumers.

2. RAIZA M. BELTRAN, PHD, MPH

Postdoctoral Researcher, UCLA HHIPP, Luskin School of Social Welfare

TAM PHAN, PHARM.D, AAHIVP

Assistant Professor of Clinical Pharmacy, USC School of Pharmacy

Presentation Title: Pharmacist delivered PrEP and PEP in three high priority EHE counties in CA (Los Angeles, Riverside and San Bernardino Counties): An overview.

Presentation Summary: For this presentation, we will provide a short overview of our proposed project that builds community capacity to better examine the facilitators and barriers to pharmacists-furnished HIV services in select priority areas of Southern California.

3. CARL HIGHSHAW, PH.D

CEO and Founder, Arming Minorities Against Addiction and Disease (AMAAD) Institute

SUNG-JAE LEE, PH.D

Professor-in-Residence, Department of Psychiatry and Biobehavioral Sciences, David Geffen School of Medicine, UCLA

Presentation Title: Haus of C.H.O.P (Choosing Healthy Options for Prevention/PrEP)

Presentation Summary: For this study, we provide a plan on the equity-focused approaches aimed at optimizing engagement of young Black LGBTQ+ individuals across the PrEP care continuum by partnering with House & Ball Community (H&BC) members using social work guiding principles.

4. CORRINA MOUCHERAUD, SCD, MPH

Associate Professor, Department of Health Policy and Management, Fielding School of Public Health, UCLA

RAPHAEL J. LANDOVITZ, MD, MSC

Professor of Medicine, Division of Infectious Disease, David Geffen School of Medicine, UCLA

Presentation Title: The incentives for prevention study (TIPS): Financially incentivizing strategies for HIV prevention in high-incidence populations in LA County

Presentation Summary: TIPS is a recently-funded project (an Ending the HIV Epidemic supplement to CHIPTS) that is using a mixed methods approach to understand how best to design an investigational financial incentives program for PrEP use and HIV prevention among young, Latino, Black and African American, cisgender men who have sex with men in South Los Angeles. This represents a collaborative research endeavor between investigators at UCLA, APLA Health & Wellness, and DHSP; and aims to generate policy- and program-relevant insights.

POSTER PRESENTATIONS



POSTER 1

GABRIEL EDWARDS, MD, MPH

Associate Project Scientist, Department of General Internal Medicine and Health Services Research, UCLA David Geffen School of Medicine

Presentation Title: Mobile Enhanced Prevention Support: App Design for People Leaving Jail

Presentation Summary: This is a project which received funding as part of the CHIPTS 2022 Mentored Pilot Grant Program. It focuses on a population at high risk for HIV – sexual and gender minorities with a recent history of incarceration and substance use, and aims to gather qualitative data on the way the population engages with mobile technology to address health and social needs. We use an implementation science framework centering around health equity to guide data collection.

POSTER 2

KHADESIA HOWELL, MPH

RAND Corporation, Doctoral Student, Pardee RAND Graduate School

Presentation Title: A 'Think Aloud' Qualitative Study to Improve Coping with Discrimination and Reduce Health Disparities among Black Sexual Minority Men

Presentation Summary: 'Think Aloud' is a processes can add depth to the quantitative and qualitative research and gives dimension to thought processes and behavioral responses. There are a variety of studies looking at Black sexual minority men and intersectionality's impact on mental health and stigma; however, they do not combine 'Think Aloud' with self-reported discrimination for a better understanding of the impact of discrimination and stigma on mental health and coping mechanisms.

POSTER 3

ALIAA IBNIDRIS, PHD

Postdoctoral Research Fellow, Neuroscience Institute, Department of Psychiatry and Mental Health, University of Cape Town

Presentation Title: Association of combined antiretroviral therapy with altered brain function and cognition dysfunction in people with HIV

Presentation Summary: Neurocognitive impairment in later stages of HIV is common and still occurs even in controlled HIV infections with combined antiretroviral therapy (cART). This project aims to look at the association between being on cART with brain function as well as with cognitive performance in people with HIV.

POSTER 4

RICARDO MENDOZA LEPE, PHD

Bilingual Research Coordinator, Bienestar Human Services

Presentation Title: Desde su Perspectiva: Inclusivity and Research Community Advisory Boards in Transgender Research

Presentation Summary: Meetings to improve research about their communities, learn and be part of their research, learn about research development, and create inclusive and trusted programs for the transgender community.

POSTER 5

AMANDA P. MILLER, PHD, MS

Postdoctoral Fellow, San Diego State University-University of California San Diego (Joint T32 program)

Presentation Title: Evaluating the relationship between hazardous alcohol use and intimate partner violence and PrEP use in pregnant and breastfeeding women at high risk of HIV in Cape Town, South Africa

Presentation Summary: HIV, perinatal alcohol use and intimate partner violence (IPV) represent a syndemic that produces a tremendous public health burden for both mother and fetus in South Africa. Contextualizing drivers of alcohol use and risk factors for IPV among pregnant and breastfeeding women and how alcohol use, IPV victimization and other social determinants of health experienced by South African women influence decision making around PrEP use will provide critical insight into potential points of intervention to address these intersecting health issues. We qualitatively explored these themes among pregnant women at high risk of HIV infection who report using alcohol and/or experiencing intimate partner violence during pregnancy.

POSTER 6

BRET MOULTON, MPH

Supervising Epidemiologist, Los Angeles County Department of Public Health, Division of HIV and STD Programs

Presentation Title: "Ending the HIV Epidemic" in Los Angeles County: HIV Diagnoses Among Clients Utilizing Free, Mailed HIV Self-Test Kits

Presentation Summary: As an emerging strategy to expand HIV testing availability, self-testing can expand screening access to persons who might experience barriers to accessing health care. Since 2020, Los Angeles County has provided free HIV self-test kits through the mail to targeted residents. One-third of people who ordered a kit reported never testing for HIV before, and 1.1% of participants had an HIV diagnosis within one year.

POSTER 7

JADA WILLIAMS, BS

Graduate Student, UCLA Division of Population Behavioral Health

Presentation Title: Experiences of the COVID-19 Pandemic Among Queer Black Men in Los Angeles: Reflections from a Virtual Listening Session

Presentation Summary: The CFAR Health Disparities Core convened a virtual listening session with queer Black men living in Los Angeles to describe the meanings of a shared lived experience, as well as the situations, conditions, and contexts that are part of the lived experience of participants. The current study was designed to better understand the experiences of queer Black men, including experiences associated with their sexual minority and race or racialized identities during the COVID-19 pandemic.

POSTER 8

JOCELYN LIMAS, BSC

Graduate Student Researcher, UCLA Fielding School of Public Health - Epidemiology, UCLA Semel Institute Center for Community Health

Presentation Title: Barriers to PrEP initiation among at-risk youth in Los Angeles and New Orleans

Presentation Summary: HIV PrEP uptake among adolescents and young adults remains low, prompting research and interventions to address barriers to PrEP initiation with a focus on expanding PrEP awareness and knowledge. In this analysis, data from a study of the Adolescents HIV Medicines Trial Network (ATN 149) was used to identify other underlying and often overlooked barriers to PrEP initiation amongst this population and how these barriers changed over time.

POSTER 9

RESHMI MUKERJI, MPH

Graduate Student, University College London, Institute for Global Health

Presentation Title: Qualitative study of intersectional stigma of HIV and other marginalized identities among women living with HIV in India

Presentation Summary: Women living with HIV carry a disproportionate burden of HIV stigma, especially in countries where gender discrimination is rampant. Women who have additional marginalized identities often experience worsened violence as a result of multiple stigmas. The nature of this violence can be temporal in nature, as there is a reduction in enacted and internalized stigma over time.

POSTER 10

ALI MUNGU

PhD Student, School of Health Sciences, University of Dundee

Presentation Title: Adult Girls and Young Women's experiences of HIV in the context of patriarchal culture in Murewa, Zimbabwe

Presentation Summary: This presentation presents the personal, relational and social experiences of living with HIV amongst the adolescent girls and young women (AGYW). The results of this study indicated that despite being disfranchised by HIV, AGYW demonstrated agency and resilience.

POSTER 11

ANTWAN DE'SEAN MATTHEWS, BSC

Director Of Youth Programs, Code Tenderloin

Presentation Title: Code Tenderloin Empowering Black Youth Program Provides Incentives And Resources to Address Health Disparities in San Francisco, CA.

Presentation Summary: Throughout this workshop, the audience will learn how Nonprofits can effectively provide resources and solutions for the communities they serve through program implementation. Through the EBY program process, students are incentivized to participate in the development of the program by providing financial opportunities throughout the 16 weeks. With a diverse funding source, EBY 2022 cohort funded ten interns at \$8,000 per student and three fellows at \$10,500 per student. Audience members will have learned by the end of the presentation how to develop effective programs through advocacy and program development and implementation to help address health disparities in their communities

POSTER 12

VANESSA R. WARRI, MSW,

PhD Student, UCLA Department of Social Welfare, Luskin School of Public Affairs, Center for the Study of Women

Presentation Title: Towards Justice-Centered Futures in Transgender Research: Community-Driven Insights for Repairing and Forging Stronger Academic and Community Relations

Presentation Summary: Robust safeguards against exploitative or harmful research practices related to transgender, gender-expansive, and intersex (TGI) communities have not yet fully been articulated, much less systematically implemented in institutional settings. This presentation offers reflective insights from phase one qualitative interviews of an ongoing collaboration between research universities and TGI communities in California to examine research priorities, ethical considerations, and opportunities to foster greater relationships among TGI and academic research communities

APPRECIATION

We appreciate CHIPTS leadership, members and partners for volunteering their time to help with today's conference. We thank the keynote speaker for effectively setting the stage for the conference, and the poster and oral session presenters for sharing their remarkable research with us. We would like to thank the Conference Planning Committee for their countless hours in planning and organizing this conference, namely Damilola Jolayemi, Norweeta Milburn and Dallas Swendeman. We equally appreciate the CHIPTS team, Uyen Kao, Enrique Sanchez, Elena Rosenberg-Carlson as well as UCLA IT, for their support towards making the conference a success. We would also like to thank the CHIPTS faculty, Community Advisory Board and volunteer reviewers for their continued service in reviewing and providing feedback on the conference abstracts. We thank the keynote speaker for effectively setting the stage for the conference, and the poster and oral session presenters for sharing their amazing research with us today.

CONTINUING EDUCATION CREDIT

This free continuing education training is available to nurses and mental health providers. This activity has been planned and implemented by CHIPTS and the Los Angeles Region Pacific AIDS Education and Training Center (LA PAETC) and followed the accreditation requirements and policies of the California Board of Registered Nursing and California Board of Behavioral Science.

The Pacific AIDS Education and Training Center - Los Angeles Area is accredited to provide the following: Continuing LCSW and MFT Education Credit. Courses meet the qualification for a maximum 3.5 hour of continuing education credit for LMFTs, LCSWs, LPCCs, and LEPs as required by the California Board of Behavioral Sciences. Provider #PCE 128280. Continuing Nursing Education Credit. Course is approved for a maximum of 3.5 contact hour by the California Board of Registered Nursing. Provider #15484.

Thank you for attending this conference!

Conference resources will be available post-conference on the conference website.